

PART OF THE SE 1/4 SEC. 35, T.7N., R.1E., S.L.B. & M.

95

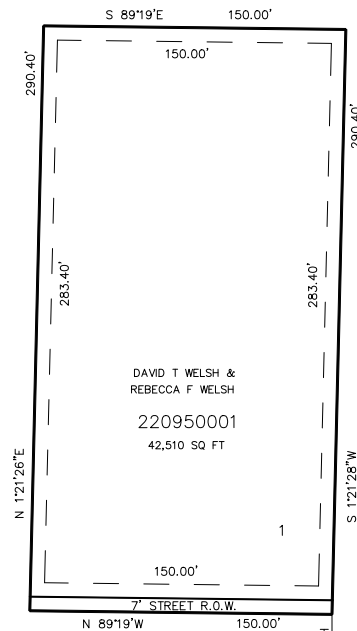
FULLER ESTATES

IN WEBER COUNTY

TAXING UNIT: 28

SCALE 1"=50'

SEE PAGE 49

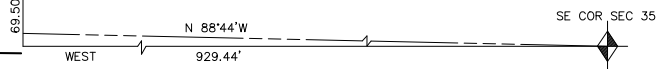


SEE PAGE 49

SEE PAGE 49

7' UTILITY EASEMENT EACH
SIDE OF PROPERTY LINE AS
INDICATED BY DASHED LINES.

1900 NORTH ST.



SEE PAGE 49

FOR COMPLETE ENG. DATA
SEE ORIG. DEDICATION PLAT
IN BOOK 28, PAGE 33 OF RECORDS.

FOR TAX PURPOSES ONLY

L.D.T. 8-86