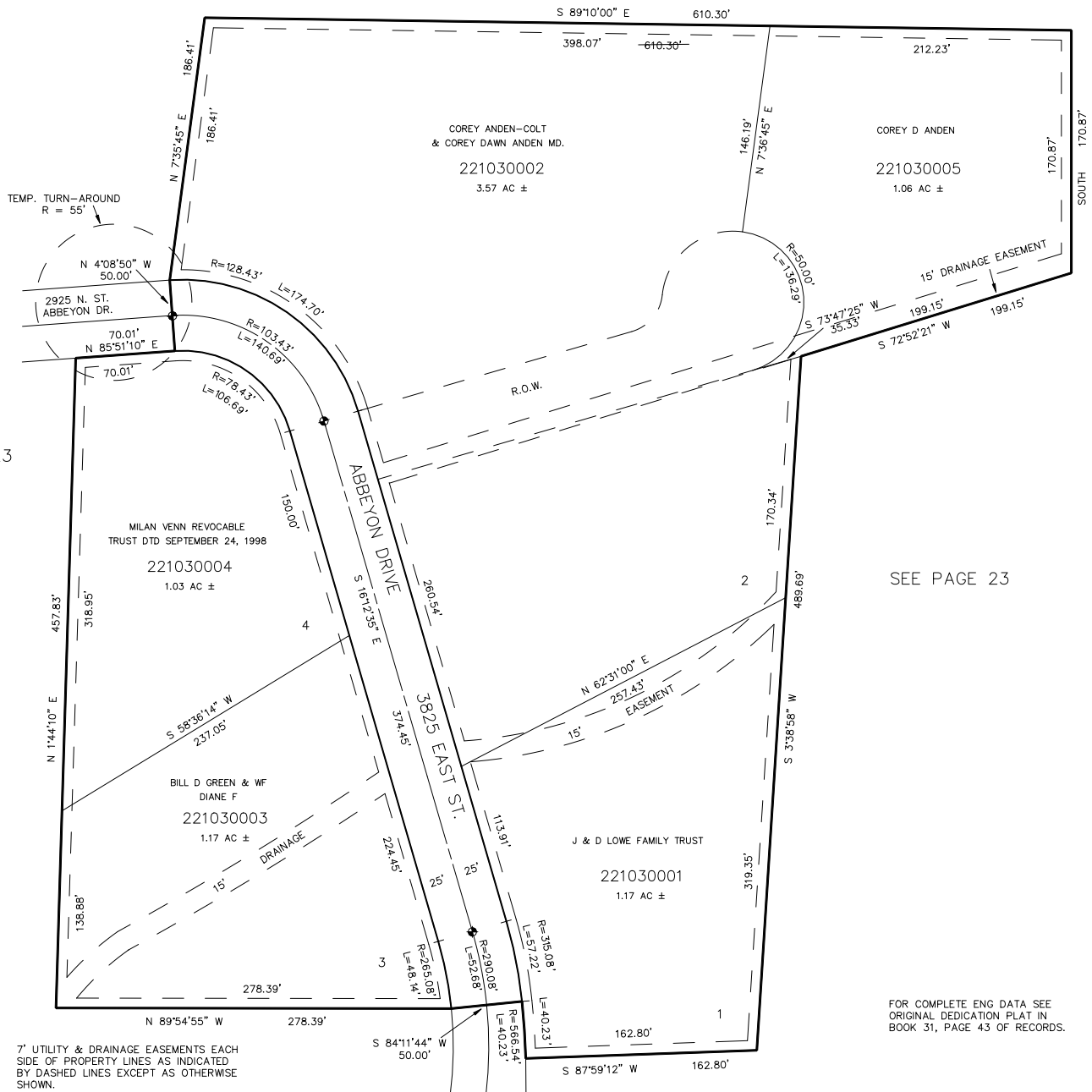


PART OF THE SE 1/4, SEC. 29, T.7N., R.1E., S.L.B. & M.
ABBEYON ESTATES NO. 1
 IN WEBER COUNTY
 SCALE 1" = 60'

103

TAXING UNIT: 36

SEE PAGE 23



SEE PAGE 23

SEE PAGE 23

FOR COMPLETE ENG DATA SEE
 ORIGINAL DEDICATION PLAT IN
 BOOK 31, PAGE 43 OF RECORDS.

FOR TAX PURPOSES ONLY SEE PAGE 23