

PART OF THE NW 1/4, SEC. 35, T.7N., R.1E., S.L.B. & M.

108

# TIXIER SUBDIVISION

IN WEBER COUNTY

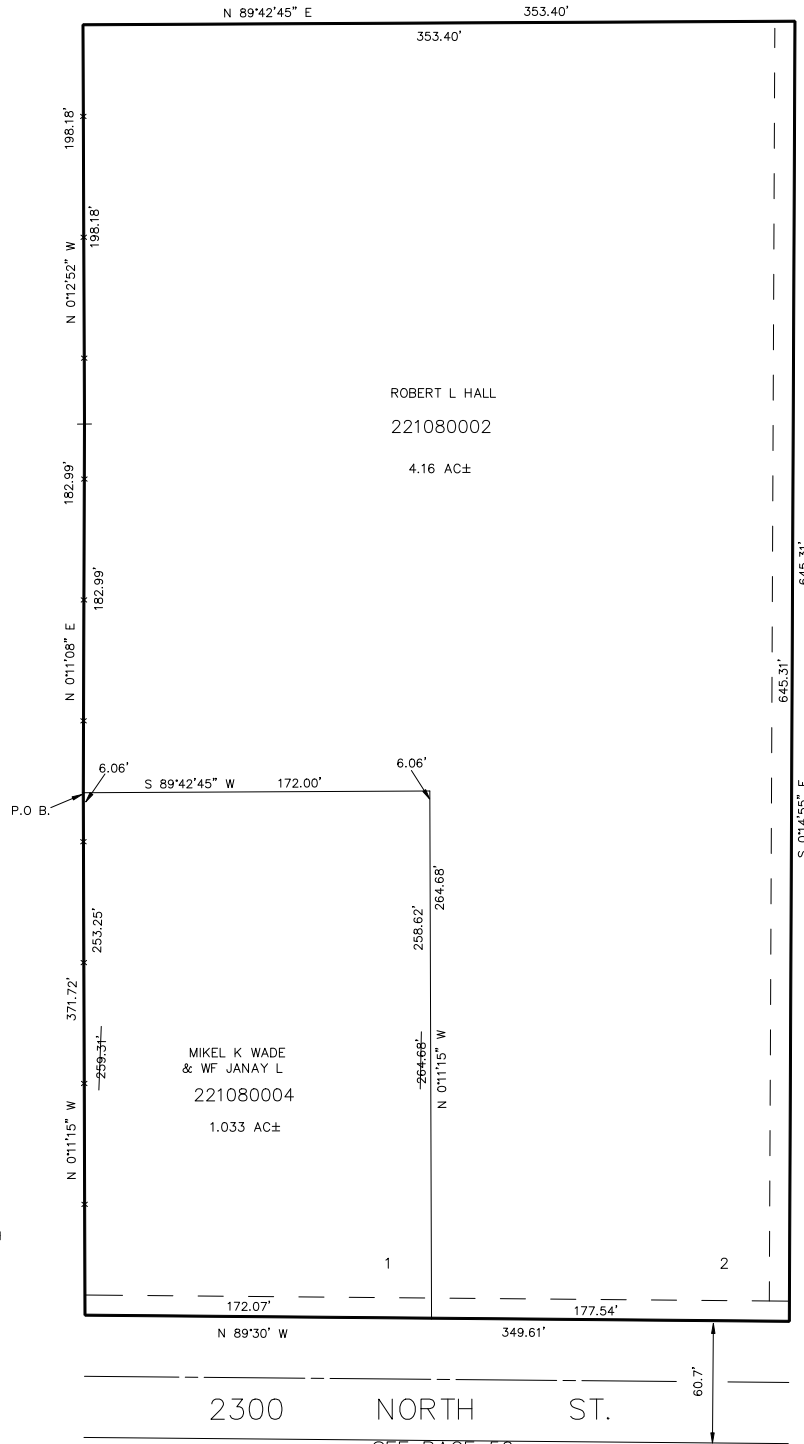
SCALE 1" = 50'

TAXING UNIT: 28

SEE PAGE 50

SEE PAGE 50

SEE PAGE 50



10' UTILITY & DRAINAGE EASEMENTS EACH SIDE OF PROPERTY LINES AS INDICATED BY DASHED LINES EXCEPT AS OTHERWISE SHOWN.

FOR COMPLETE ENG DATA SEE ORIGINAL DEDICATION PLAT IN BOOK 35, PAGE 81 OF RECORDS.