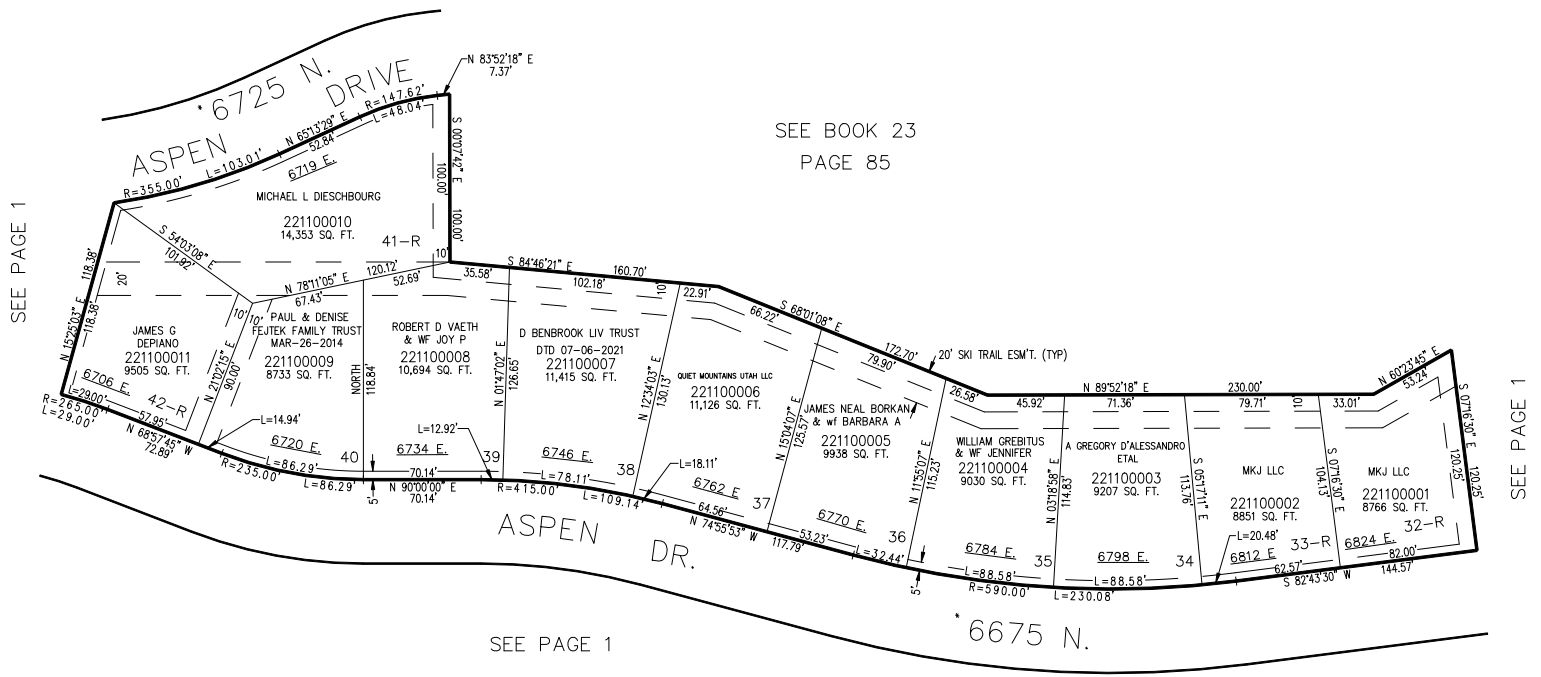


PART OF SEC. 1, T.7N., R.1E., & SEC. 36, T.8N., R.1E., S.L.B. & M.
POWDER MOUNTAIN WEST SUBDIVISION – PHASE 2

IN WEBER COUNTY

TAXING UNIT: 90

SCALE 1" = 60'



* STREET CORRECTION
#2003067 6-JAN-2004

NOTE: LOTS 32, 33, 41, & 42
SHALL REQUIRE COUNTY HILLSIDE
REVIEW APPROVAL.

FOR COMPLETE ENG DATA SEE
ORIGINAL DEDICATION PLAT IN
BOOK 36, PAGE 81 OF RECORDS.

FOR TAX PURPOSES ONLY