

PART OF THE N.E. 1/4, SEC. 20, T.7N., R.1E., S.L.B. & M.

SEE PAGE 10

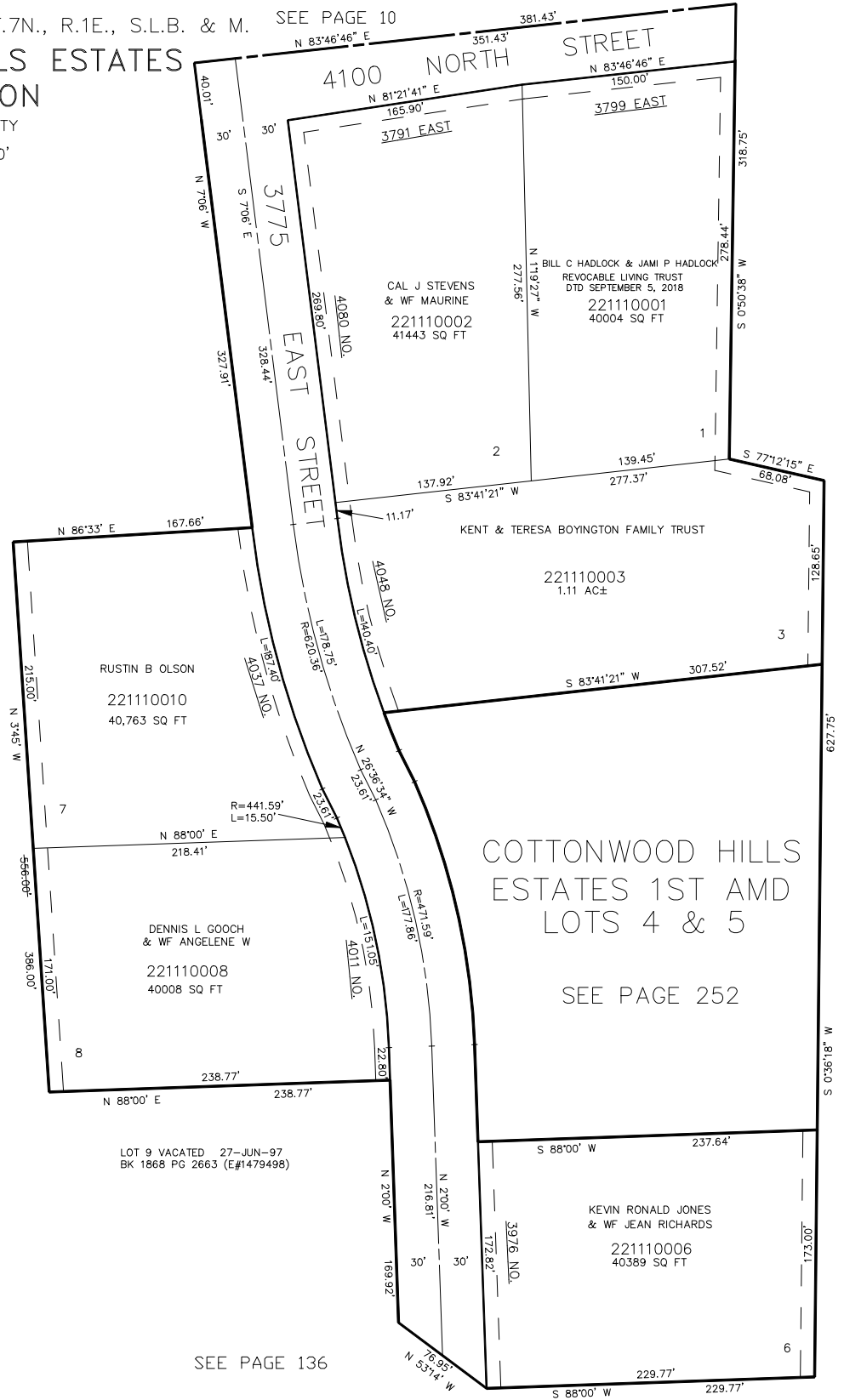
111

COTTONWOOD HILLS ESTATES SUBDIVISION

IN WEBER COUNTY

TAXING UNIT: 36

SCALE 1" = 60'



SEE PAGE 10

SEE PAGE 10

COTTONWOOD HILLS
ESTATES 1ST AMD
LOTS 4 & 5

SEE PAGE 252

FOR COMPLETE ENG DATA SEE
ORIGINAL DEDICATION PLAT IN
BOOK 38, PAGE 5 OF RECORDS.

10' UTILITY & DRAINAGE EASEMENTS EACH
SIDE OF PROPERTY LINES AS INDICATED
BY DASHED LINES EXCEPT AS OTHERWISE
SHOWN.

SEE PAGE 136

FOR TAX PURPOSES ONLY

BMO 5-94