

PART OF THE N.1/2, SEC. 22, T.7N., R.1E., S.L.B. & M. WOLF RIDGE SUBDIVISION – PHASE 1

IN WEBER COUNTY

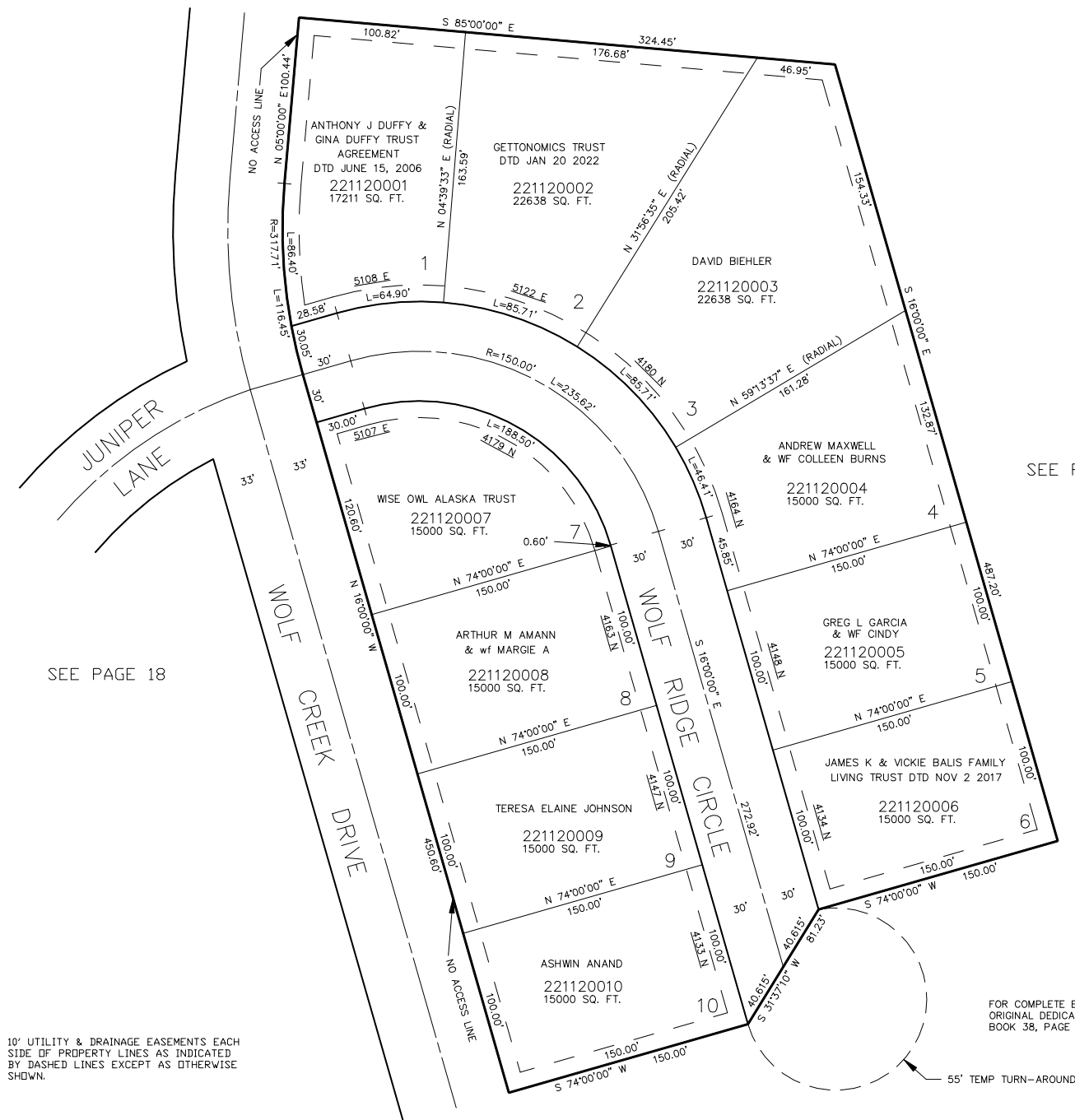
SCALE 1" = 50'

TAXING UNIT: 203

SEE PAGE 19

SEE PAGE 16

SEE PAGE 18



SEE PAGE 17

FOR TAX PURPOSES ONLY

JPS 9-94