

PART OF THE SE.1/4, OF SEC. 22, T.7N., R.1E., S.L.B. & M.
WOLF RIDGE – PHASE 4 SUBDIVISION

IN WEBER COUNTY

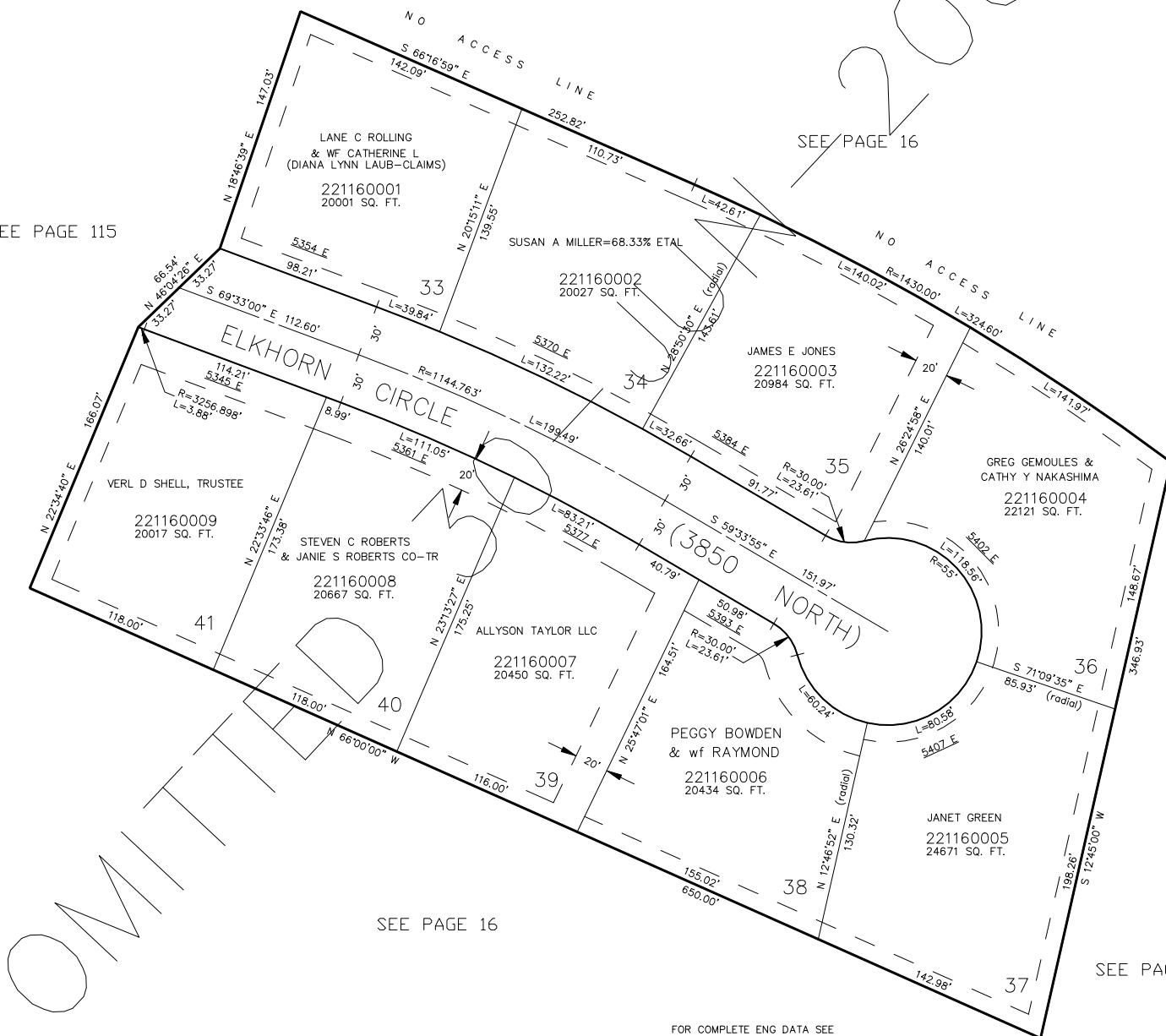
TAXING UNIT: 203

SCALE 1" = 50'

2005

SEE PAGE 115

SEE PAGE 16



SEE PAGE 16

SEE PAGE 16

10' UTILITY & DRAINAGE EASEMENTS EACH
 SIDE OF PROPERTY LINES AS INDICATED
 BY DASHED LINES EXCEPT AS OTHERWISE
 SHOWN.

FOR COMPLETE ENG DATA SEE
 ORIGINAL DEDICATION PLAT IN
 BOOK 39, PAGE 64 OF RECORDS.