

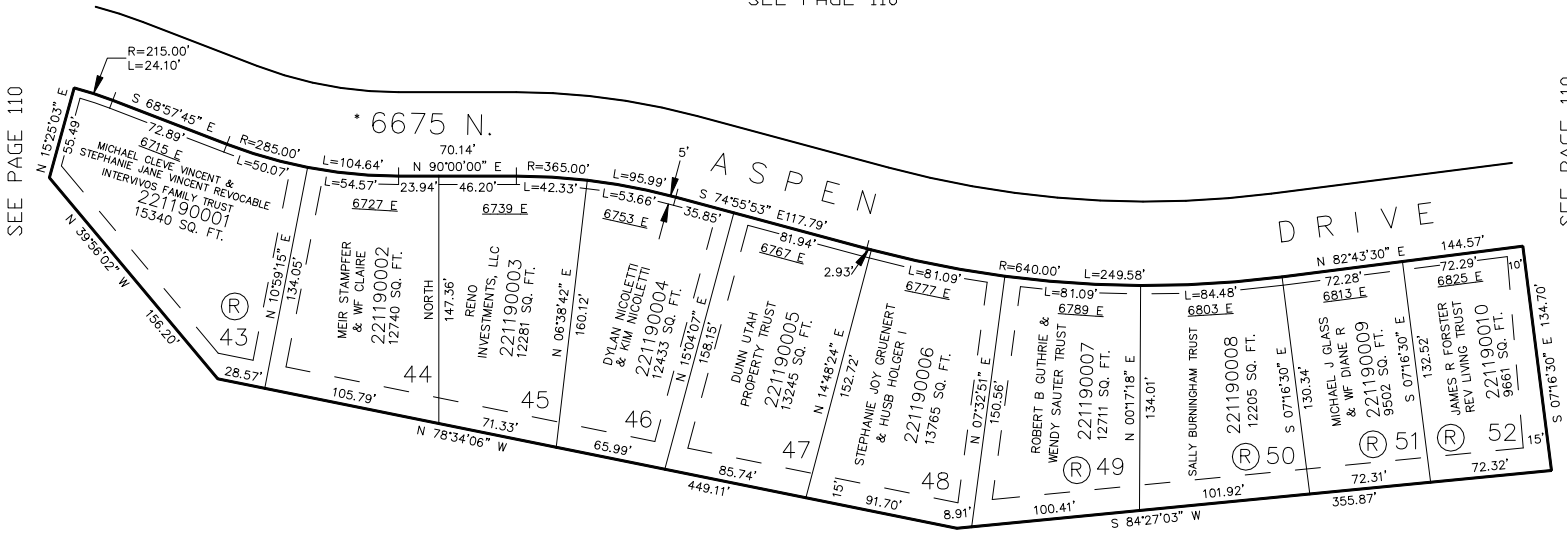
PART OF SEC. 1, T.7N., R.1E., S.L.B. & M.  
POWDER MOUNTAIN WEST SUBDIVISION – PHASE 3

IN WEBER COUNTY

TAXING UNIT: 90

SCALE 1" = 60'

SEE PAGE 110



SEE PAGE 1-2

\* STREET CORRECTION  
#2003067 6-JAN-2004

(R) LOTS SHALL REQUIRE COUNTY  
HILLSIDE REVIEW APPROVAL

FOR COMPLETE ENG DATA SEE  
ORIGINAL DEDICATION PLAT IN  
BOOK 39, PAGE 93 OF RECORDS.

10' UTILITY & DRAINAGE EASEMENTS EACH  
SIDE OF PROPERTY LINES AS INDICATED  
BY DASHED LINES EXCEPT AS OTHERWISE  
SHOWN.

\*FOR TAX PURPOSES ONLY\*