

PART OF THE S.E. 1/4, SEC. 7, T.7N., R.1E., S.L.B. & M.

## FOX CROSSING SUBDIVISION

IN WEBER COUNTY

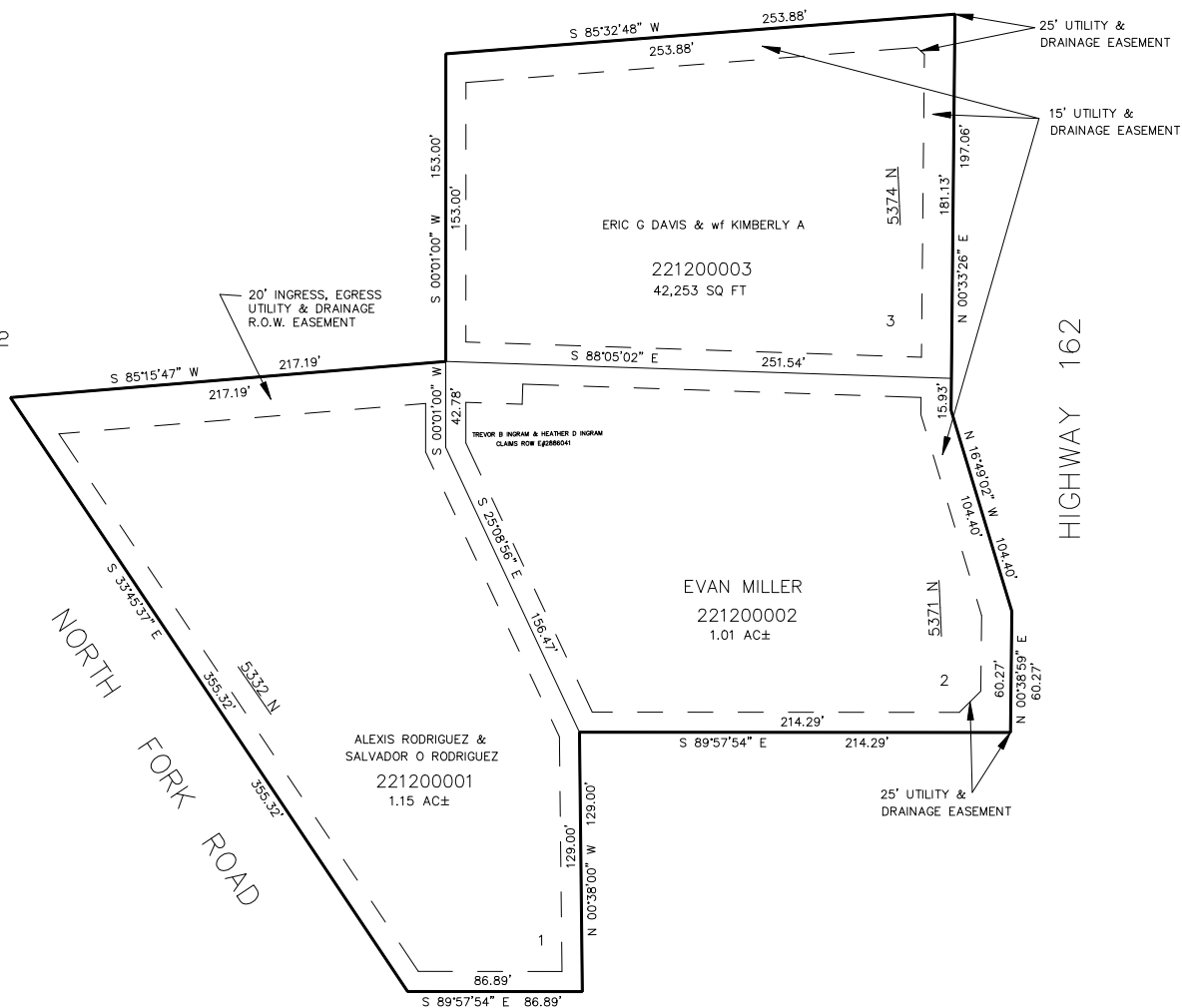
SCALE 1" = 50'

TAXING UNIT: 36

SEE PAGE 4-2

SEE PAGE 4-2

SEE PAGE 4-2



10' UTILITY & DRAINAGE EASEMENTS EACH  
SIDE OF PROPERTY LINES AS INDICATED  
BY DASHED LINES EXCEPT AS OTHERWISE  
SHOWN.

FOR COMPLETE ENG DATA SEE  
ORIGINAL DEDICATION PLAT IN  
BOOK 40, PAGE 11 OF RECORDS.

SEE PAGE 4-2