

PART OF THE N.W. 1/4, SEC. 34, T.7N., R.1E., S.L.B. & M.

121

KIMBERS SUBDIVISION

IN WEBER COUNTY

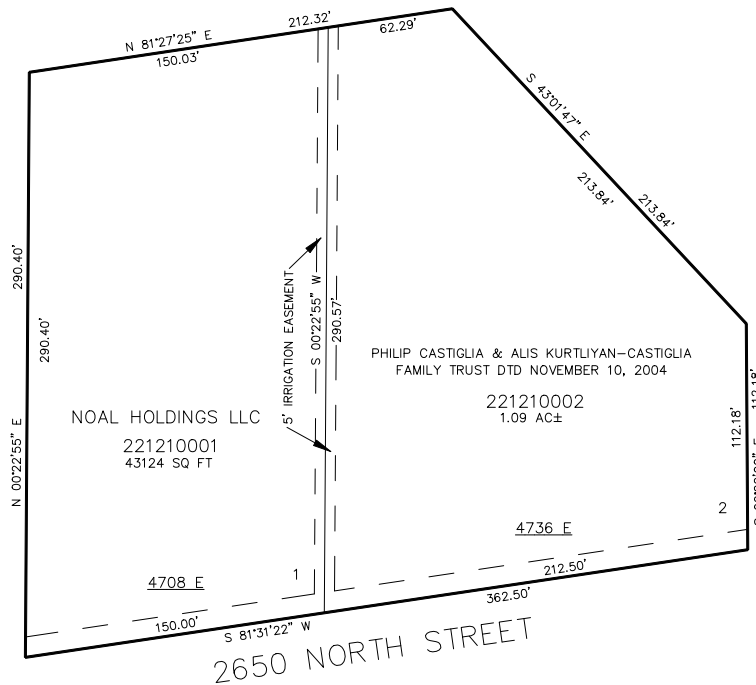
TAXING UNIT: 28

SCALE 1" = 50'

SEE PAGE 46

SEE PAGE 40

SEE PAGE 46



SEE PAGE 46

10' UTILITY & DRAINAGE EASEMENTS EACH
SIDE OF PROPERTY LINES AS INDICATED
BY DASHED LINES EXCEPT AS OTHERWISE
SHOWN.

FOR TAX PURPOSES ONLY