

PART OF THE N.1/2, OF SEC. 22, T.7N., R.1E., S.L.B. & M.  
WOLF RIDGE SUBDIVISION PHASE - 2

IN WEBER COUNTY

TAXING UNIT: 203

SCALE 1" = 60'

SEE PAGE 112

SEE PAGE 16

SEE PAGE 18

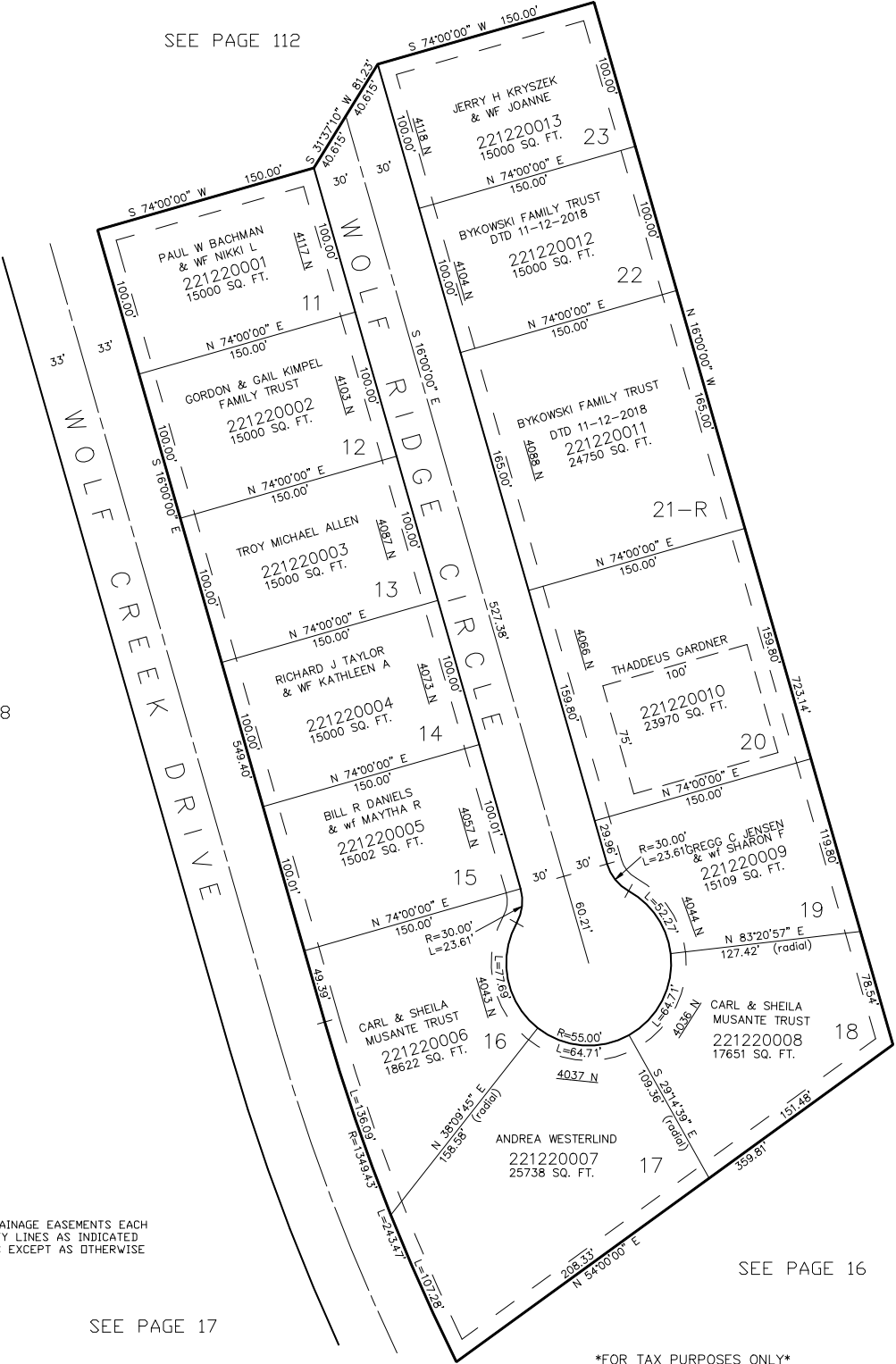
FOR COMPLETE ENG DATA SEE  
ORIGINAL DEDICATION PLAT IN  
BOOK 40, PAGE 55 OF RECORDS.

SEE PAGE 16

SEE PAGE 17

\*FOR TAX PURPOSES ONLY\*

JPS 9-95



10' UTILITY & DRAINAGE EASEMENTS EACH  
SIDE OF PROPERTY LINES AS INDICATED  
BY DASHED LINES EXCEPT AS OTHERWISE  
SHOWN.