

PART OF THE S.E 1/4 OF SEC. 22 & PART OF THE S.W 1/4 OF SEC. 23, T.7N., R.1E., S.L.B. & M.
ELKHORN SUBDIVISION, PHASE 1

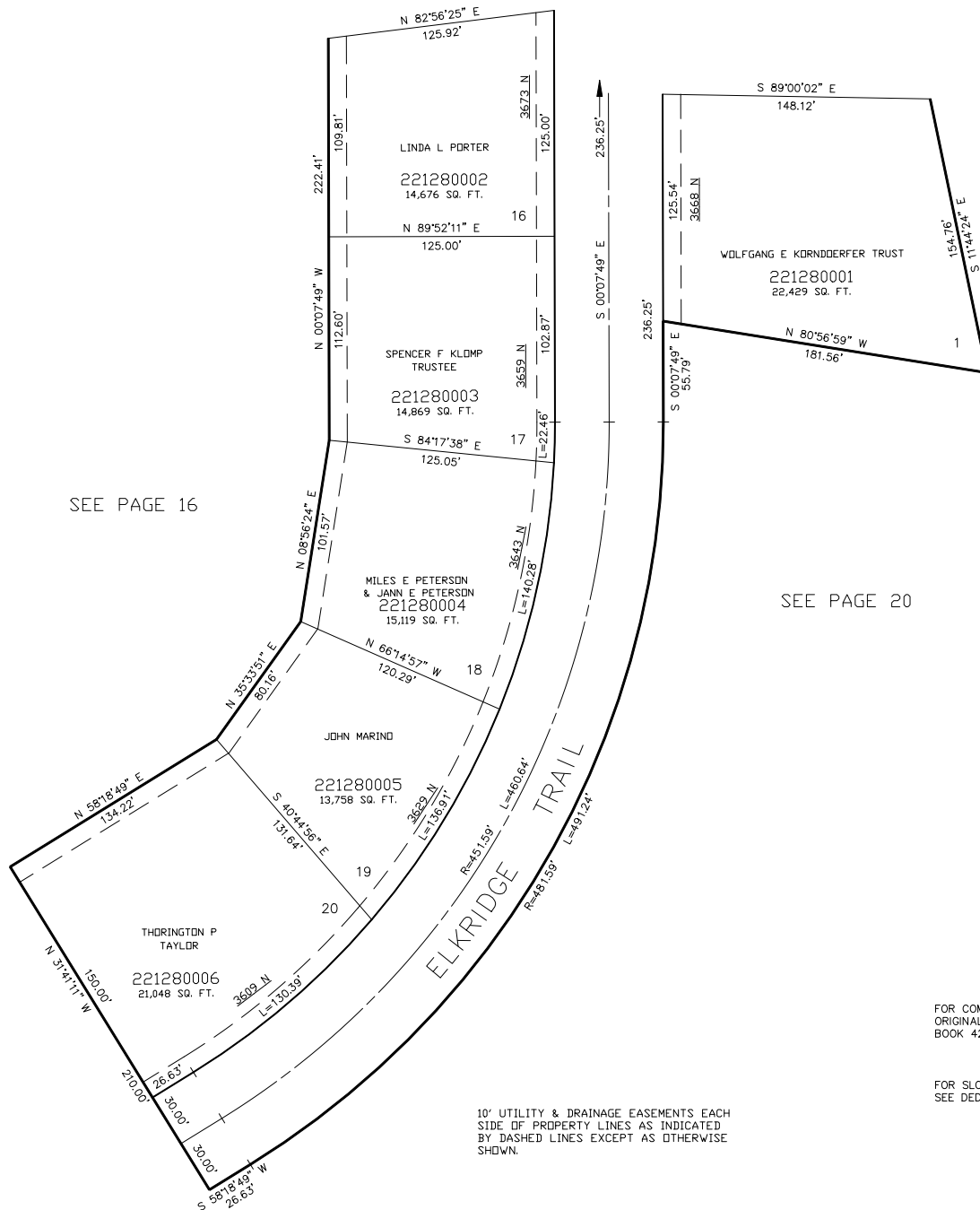
128

IN WEBER COUNTY

TAXING UNIT: 203

SCALE 1" = 50'

SEE PAGE 129



FOR TAX PURPOSES ONLY

MTT 07-96