

PART OF THE SE 1/4 OF SEC. 22 & PART OF THE NE 1/4 OF SEC. 27, T.7N., R.1E., S.L.B. & M.
ELKHORN SUBDIVISION, PHASE 2 LOTS 24 THROUGH 28 AMENDED

130

IN WEBER COUNTY

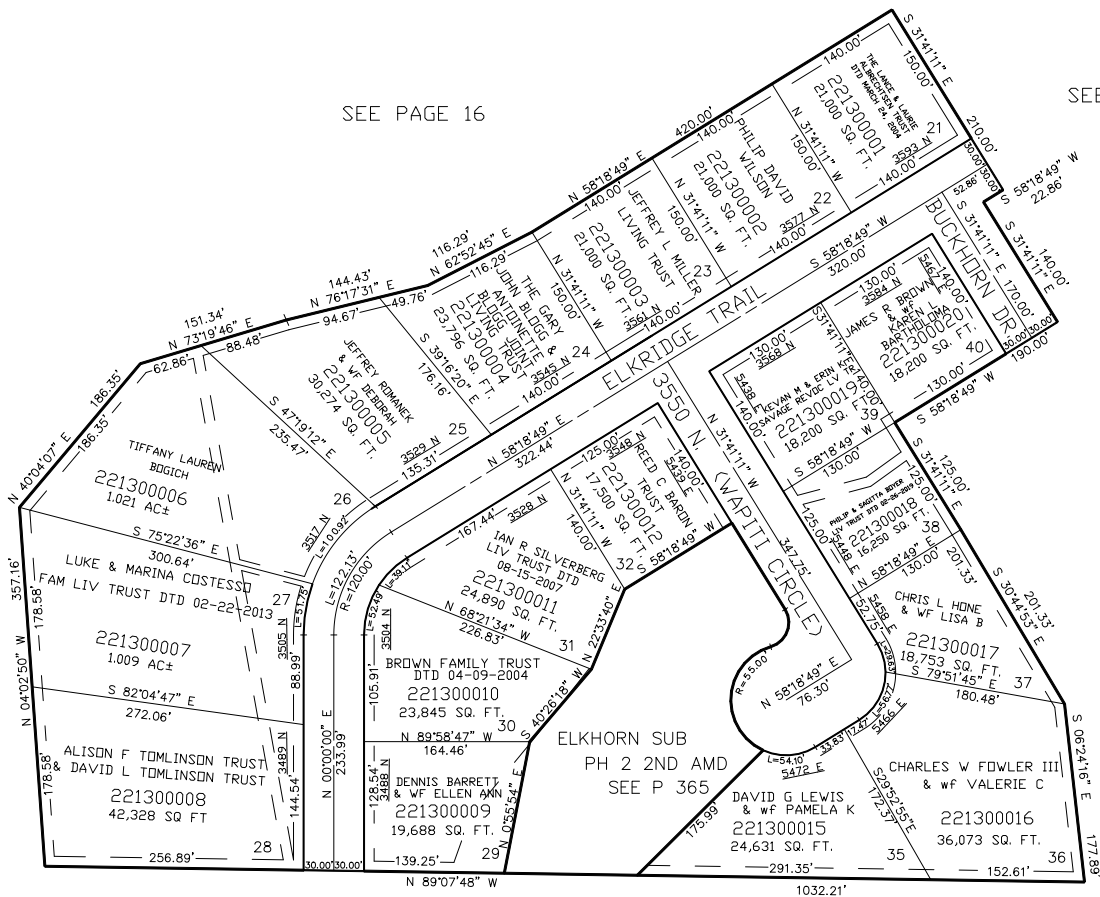
TAXING UNIT: 203

SCALE 1" = 100'

SEE PAGE 16

SEE PAGE 128

SEE PAGE 16



SEE PAGE 16

SEE PAGE 16

FOR COMPLETE ENG DATA SEE
ORIGINAL DEDICATION PLAT IN
BOOK 42 PAGE 43 OF RECORDS.
AMENDED, 46-94

10' UTILITY & DRAINAGE EASEMENTS EACH
SIDE OF PROPERTY LINES AS INDICATED
BY DASHED LINES EXCEPT AS OTHERWISE
SHOWN.

FOR TAX PURPOSES ONLY

KST 6-98