

COTTONWOOD HILLS ESTATES SUBDIVISION PHASE-2

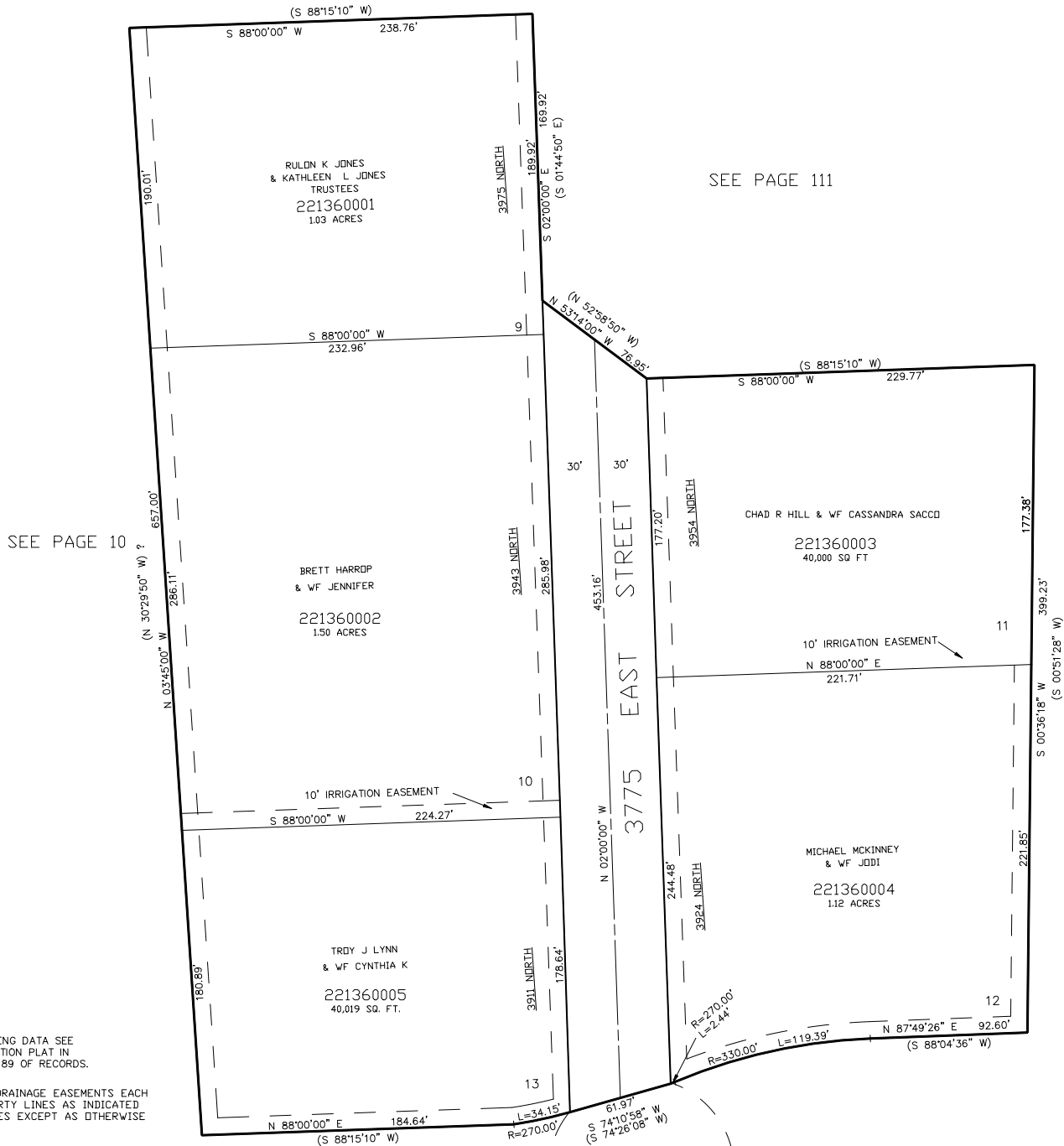
136

PART OF THE E 1/2, OF SEC. 20, T.7N., R.1E., S.L.B. & M.

IN WEBER COUNTY

SCALE 1" = 50'

TAXING UNIT: 36



FOR COMPLETE ENG DATA SEE
ORIGINAL DEDICATION PLAT IN
BOOK 44, PAGE 89 OF RECORDS.

10' UTILITY & DRAINAGE EASEMENTS EACH
SIDE OF PROPERTY LINES AS INDICATED
BY DASHED LINES EXCEPT AS OTHERWISE
SHOWN.