

PART OF THE S 1/2, OF SEC. 35, T.7N., R.1E., S.L.B. & M.
GARDENS OF EDEN SUBDIVISION PHASE 2A
ALL OF LOT 14, GARDENS OF EDEN SUBD. PHASE 2

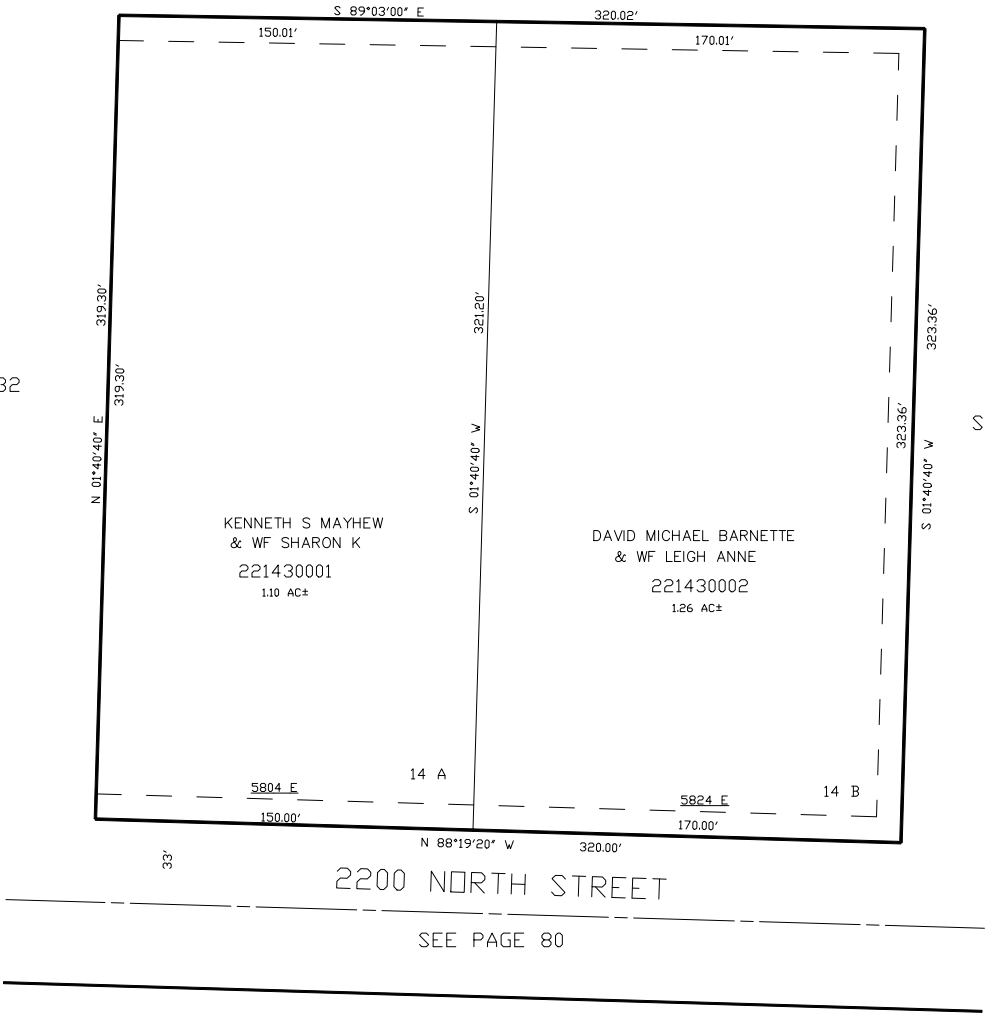
TAXING UNIT: 28

IN WEBER COUNTY
SCALE 1" = 40'

SEE PAGE 51

SEE PAGE 132

SEE PAGE 132



10' UTILITY & DRAINAGE EASEMENTS EACH
SIDE OF PROPERTY LINES AS INDICATED
BY DASHED LINES EXCEPT AS OTHERWISE
SHOWN.

FOR COMPLETE ENG DATA SEE
ORIGINAL DEDICATION PLAT IN
BOOK 48, PAGE 12 OF RECORDS.

FOR TAX PURPOSES ONLY