

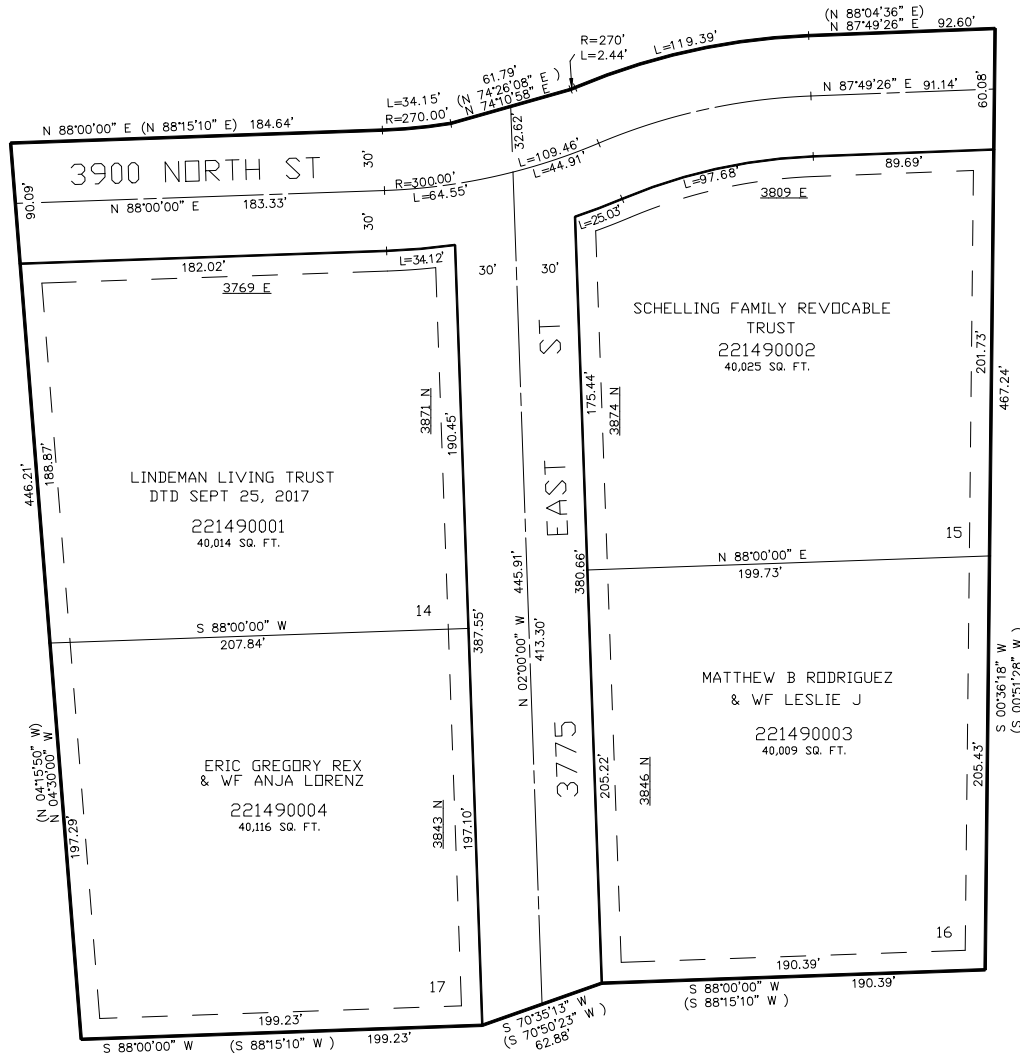
PART OF THE EAST 1/2, OF SEC. 20, T.7N., R.1E., S.L.B. & M.  
COTTONWOOD HILLS ESTATES SUBDIVISION PHASE - 3

IN WEBER COUNTY

TAXING UNIT: 36

SCALE 1" = 50'

SEE PAGE 136



SEE PAGE 13

SEE PAGE 13

10' UTILITY & DRAINAGE EASEMENTS EACH  
SIDE OF PROPERTY LINES AS INDICATED  
BY DASHED LINES EXCEPT AS OTHERWISE  
SHOWN.

FOR COMPLETE ENG DATA SEE  
ORIGINAL DEDICATION PLAT IN  
BOOK 48, PAGE 26 OF RECORDS.

\*FOR TAX PURPOSES ONLY\*