

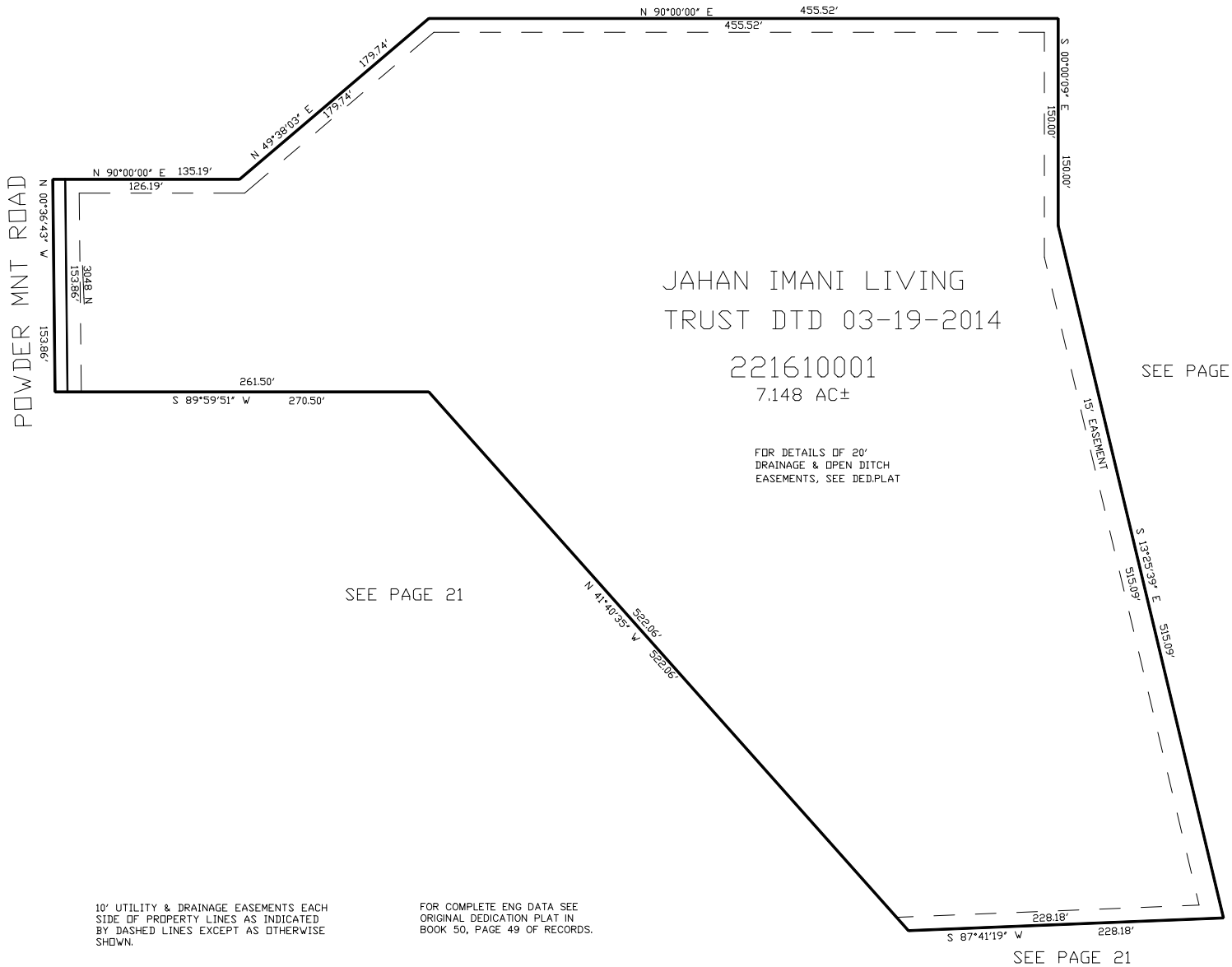
PART OF THE SE.1/4, OF SECTION 27, T.7N., R.1E., S.L.B. & M.
ANDERSEN ACRES SUBDIVISION

IN WEBER COUNTY

TAXING UNIT: 28

SCALE 1" = 60'

SEE PAGE 21



10' UTILITY & DRAINAGE EASEMENTS EACH
SIDE OF PROPERTY LINES AS INDICATED
BY DASHED LINES EXCEPT AS OTHERWISE
SHOWN.

FOR COMPLETE ENG DATA SEE
ORIGINAL DEDICATION PLAT IN
BOOK 50, PAGE 49 OF RECORDS.

FOR TAX PURPOSES ONLY

KBR 09-1999