

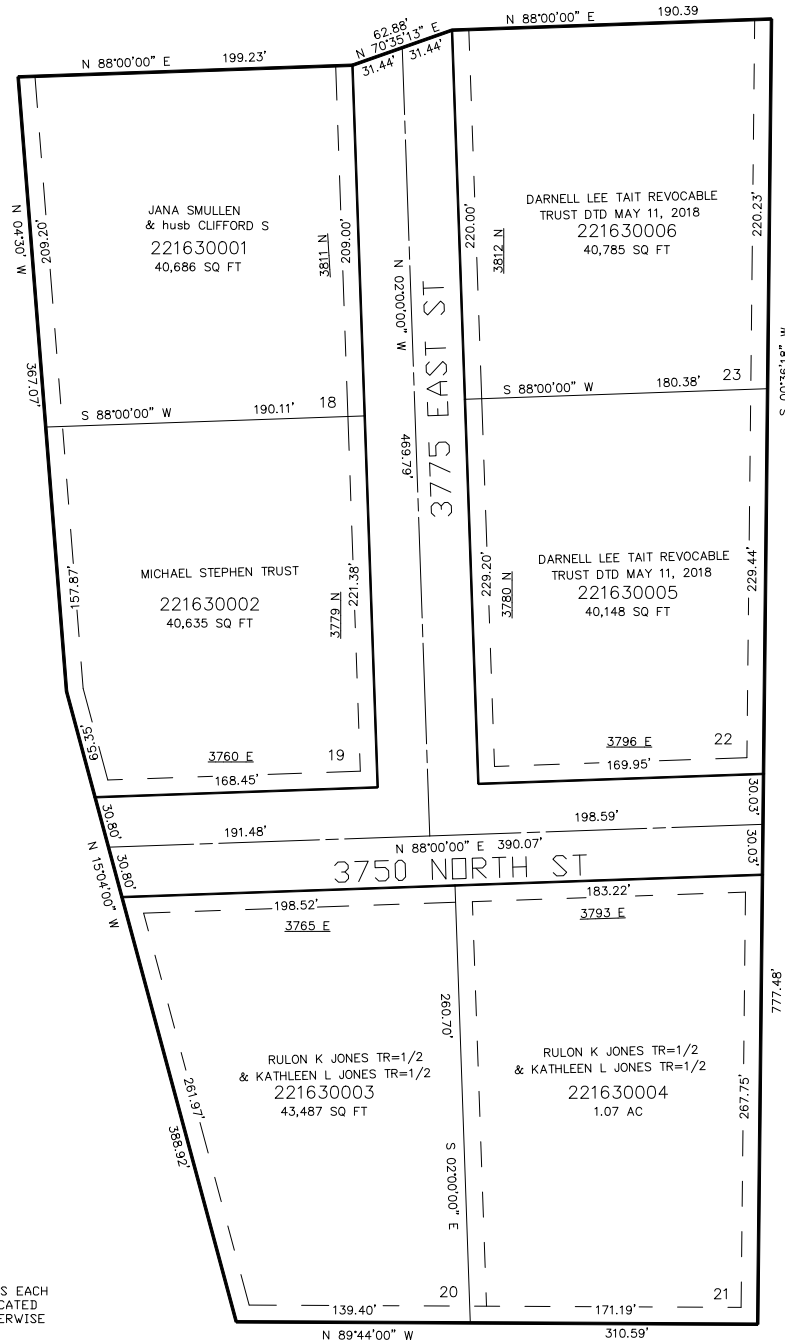
PART OF THE EAST 1/2, OF SECTION 20, T.7N., R.1E., S.L.B. & M.  
COTTONWOOD HILLS ESTATES SUBDIVISION – PHASE 4

IN WEBER COUNTY

TAXING UNIT: 36

SCALE 1" = 60'

SEE PAGE 149



SEE PAGE 13

SEE PAGE 13

10' UTILITY & DRAINAGE EASEMENTS EACH  
SIDE OF PROPERTY LINES AS INDICATED  
BY DASHED LINES EXCEPT AS OTHERWISE  
SHOWN.

FOR STORM RETENTION EASEMENT  
NOTE: SEE ORIGINAL DEDICATION PLAT

FOR COMPLETE ENG DATA SEE  
ORIGINAL DEDICATION PLAT IN  
BOOK 51, PAGE 02 OF RECORDS.

SEE PAGE 13

\*FOR TAX PURPOSES ONLY\*

JAR 11-99