

PART OF THE S.1/2, OF SECTION 26, AND
PART OF THE N.1/2, OF SECTION 34, AND
PART OF THE W.1/2, OF SECTION 35, T.7N., R.1E., S.L.B. & M.
EDEN ACRES SUBDIVISION

TAXING UNIT: 28

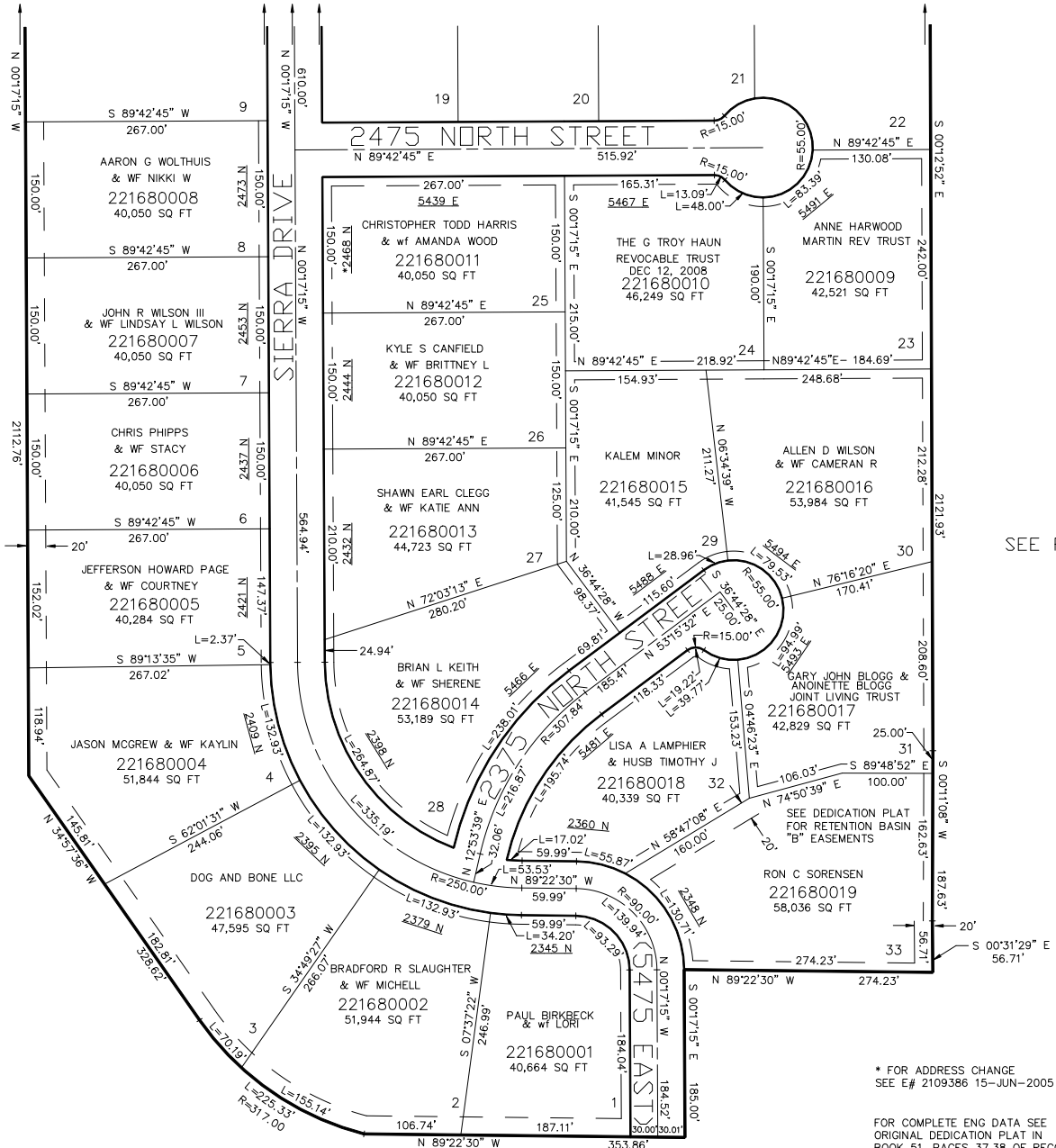
IN WEBER COUNTY

SCALE 1" = 100'

SEE PAGE 169

SEE PAGE 45

SEE PAGE 45



STATE HIGHWAY 166

SEE PAGE 45

* FOR ADDRESS CHANGE
SEE E# 2109386 15-JUN-2005

FOR COMPLETE ENG DATA SEE
ORIGINAL DEDICATION PLAT IN
BOOK 51, PAGES 37,38 OF RECORDS.

10' UTILITY & DRAINAGE EASEMENTS EACH
SIDE OF PROPERTY LINES AS INDICATED
BY DASHED LINES EXCEPT AS OTHERWISE
SHOWN.

FOR TAX PURPOSES ONLY

JAR 01-00