

PART OF THE S.E.1/4, OF SECTION 20, T.7N., R.1E., S.L.B. & M.

177

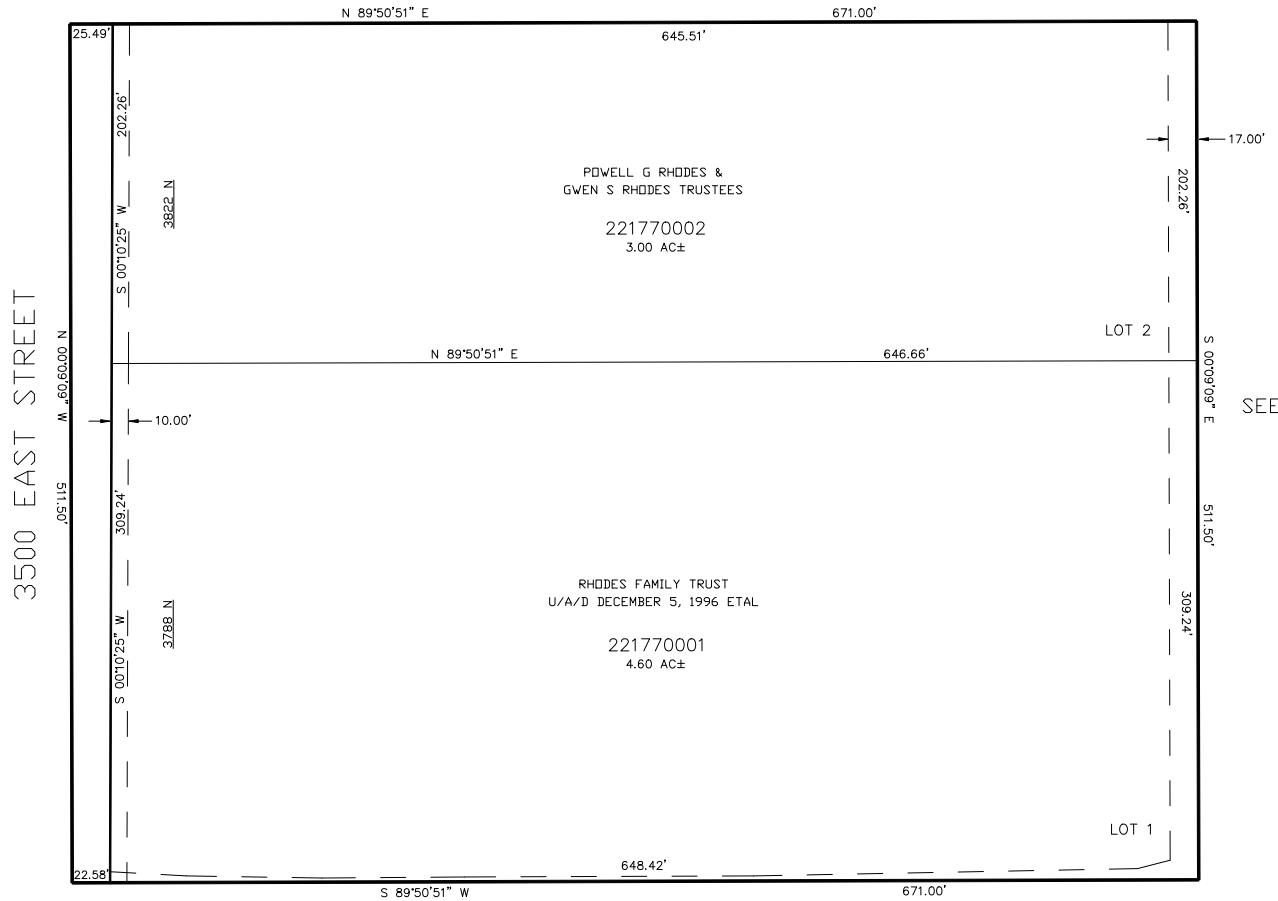
# ROCKY RHODES

IN WEBER COUNTY

TAXING UNIT: 36

SCALE 1" = 60'

SEE PAGE 13



10' UTILITY & DRAINAGE EASEMENTS EACH  
SIDE OF PROPERTY LINES AS INDICATED  
BY DASHED LINES EXCEPT AS OTHERWISE  
SHOWN.

FOR COMPLETE ENG DATA SEE  
ORIGINAL DEDICATION PLAT IN  
BOOK 52, PAGE 28 OF RECORDS.