

PART OF THE N.W. 1/4 OF SEC. 27, AND S.W. 1/4 OF SEC. 22, T.7N., R.1E., S.L.B. & M.

193

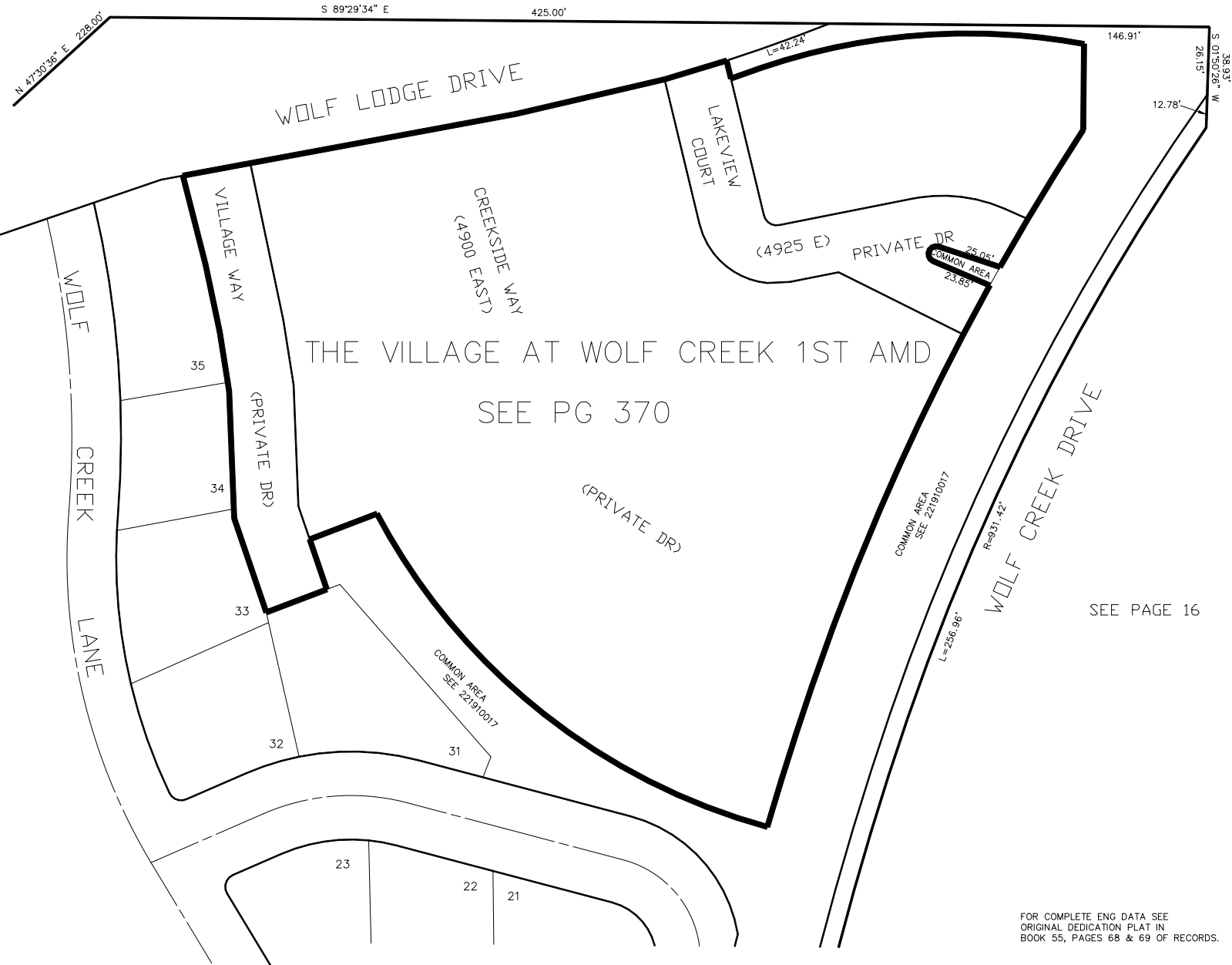
VILLAGE AT WOLF CREEK (THE)

IN WEBER COUNTY

TAXING UNIT: 203

SCALE 1" = 30'

SEE PAGE 16



SEE PAGE 16

FOR COMPLETE ENG DATA SEE
ORIGINAL DEDICATION PLAT IN
BOOK 55, PAGES 68 & 69 OF RECORDS.

SEE PAGE 192

UTILITY & DRAINAGE EASEMENTS EACH
SIDE OF PROPERTY LINES AS INDICATED
BY DASHED LINES EXCEPT AS OTHERWISE
SHOWN. 4' ON THE FRONT OF EACH LOT,
& 2' OR 3' ON THE SIDES AND BACK.

FOR TAX PURPOSES ONLY

LK 06-02