

PART OF THE NE.1/4, OF SECTION 30, T.7N., R.1E., S.L.B. & M.  
LIBERTY GRANDE SUBDIVISION

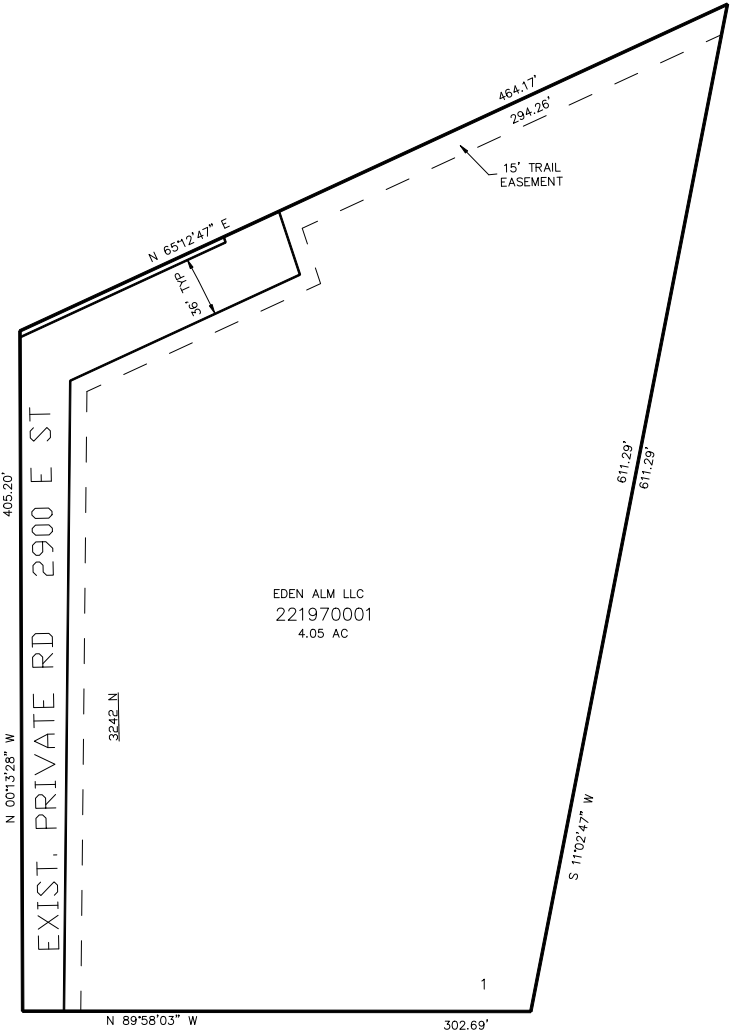
IN WEBER COUNTY  
SCALE 1" = 60'

TAXING UNIT: 36

SEE PAGE 25

SEE PAGE 25

SEE PAGE 25



SEE PAGE 25

FOR COMPLETE ENG DATA SEE  
ORIGINAL DEDICATION PLAT IN  
BOOK 56, PAGE 10 OF RECORDS.

10' UTILITY & DRAINAGE EASEMENTS EACH  
SIDE OF PROPERTY LINES AS INDICATED  
BY DASHED LINES EXCEPT AS OTHERWISE  
SHOWN.

\*FOR TAX PURPOSES ONLY\*