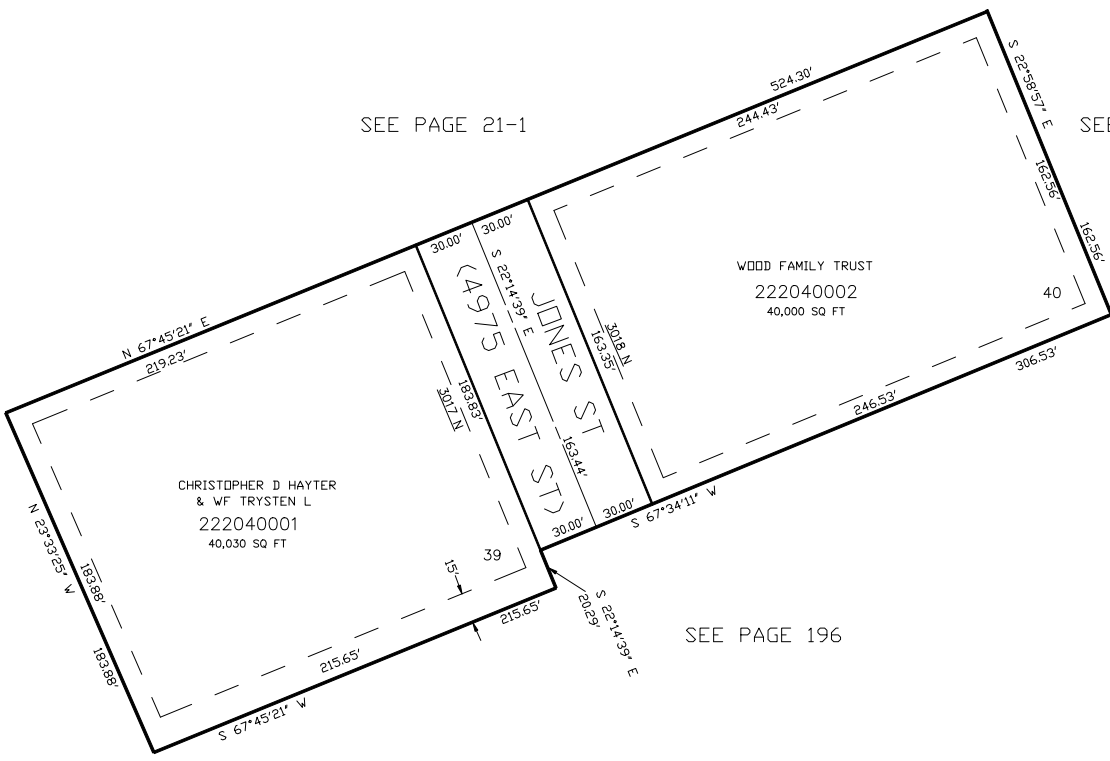


PART OF THE W.1/2, OF SECTION 27, T.7N., R.1E., S.L.B. & M.
MOUNTAIN VIEW ESTATES NO. 7

IN WEBER COUNTY
SCALE 1" = 50'

TAXING UNIT: 28



SEE PAGE 21-1

SEE PAGE 21-1

SEE PAGE 21-1

SEE PAGE 196

10' UTILITY & DRAINAGE EASEMENTS EACH
SIDE OF PROPERTY LINES AS INDICATED
BY DASHED LINES EXCEPT AS OTHERWISE
SHOWN.

FOR COMPLETE ENG DATA SEE
ORIGINAL DEDICATION PLAT IN
BOOK 58, PAGE 05 OF RECORDS.