

PART OF THE NW 1/4 OF SECTION 26, T.7N., R.1E., S.L.B. & M.
TRAPPERS RIDGE AT WOLF CREEK PRUD PH. 2

IN WEBER COUNTY

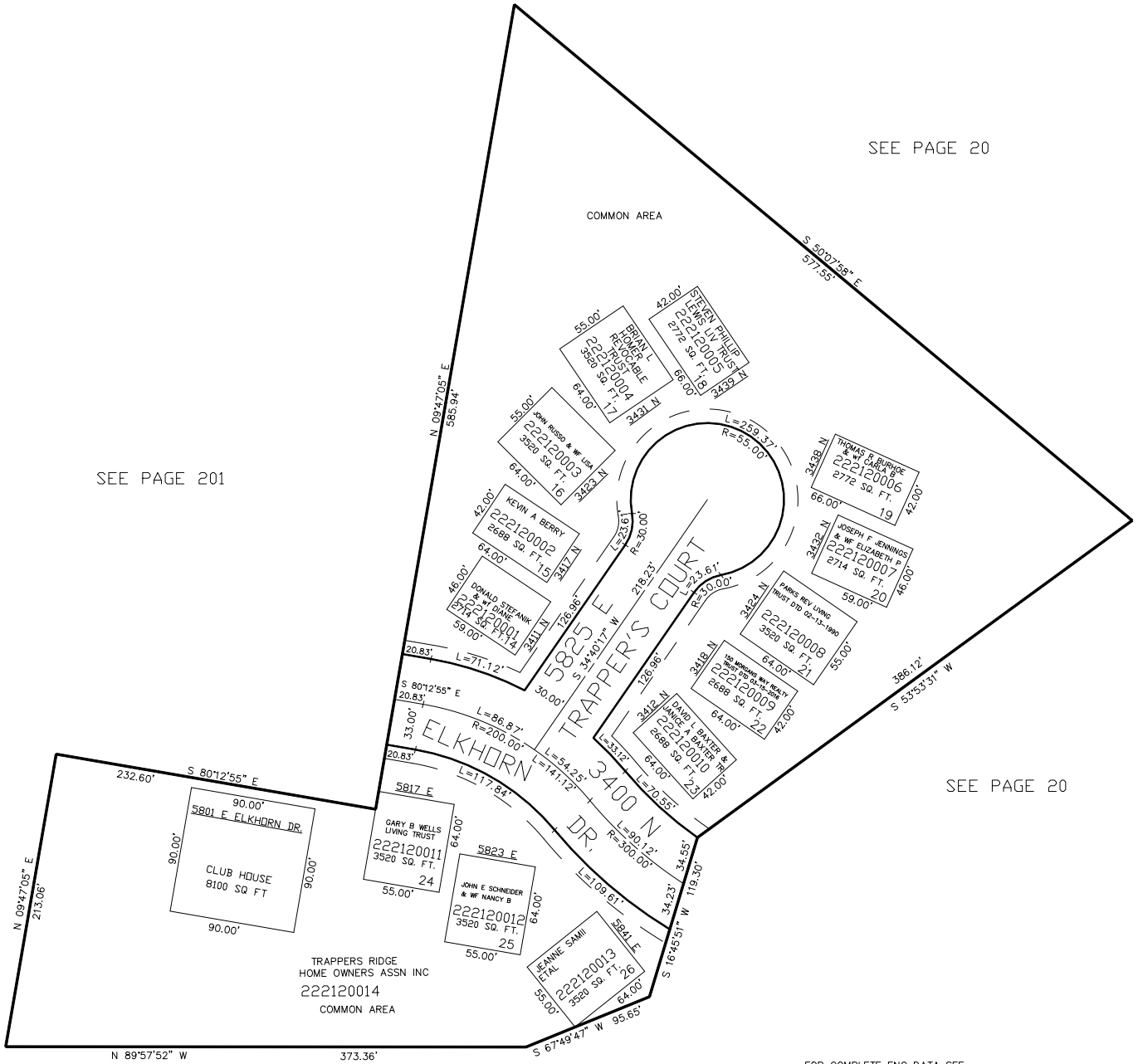
TAXING UNIT: 203

SCALE 1" = 60'

SEE PAGE 20

SEE PAGE 201

SEE PAGE 20



10' UTILITY & DRAINAGE EASEMENTS EACH
SIDE OF PROPERTY LINES AS INDICATED
BY DASHED LINES EXCEPT AS OTHERWISE
SHOWN.

SEE PAGE 20

FOR COMPLETE ENG DATA SEE
ORIGINAL DEDICATION PLAT IN
BOOK 59, PAGE 24 OF RECORDS.

FOR TAX PURPOSES ONLY

KST 4-2004