

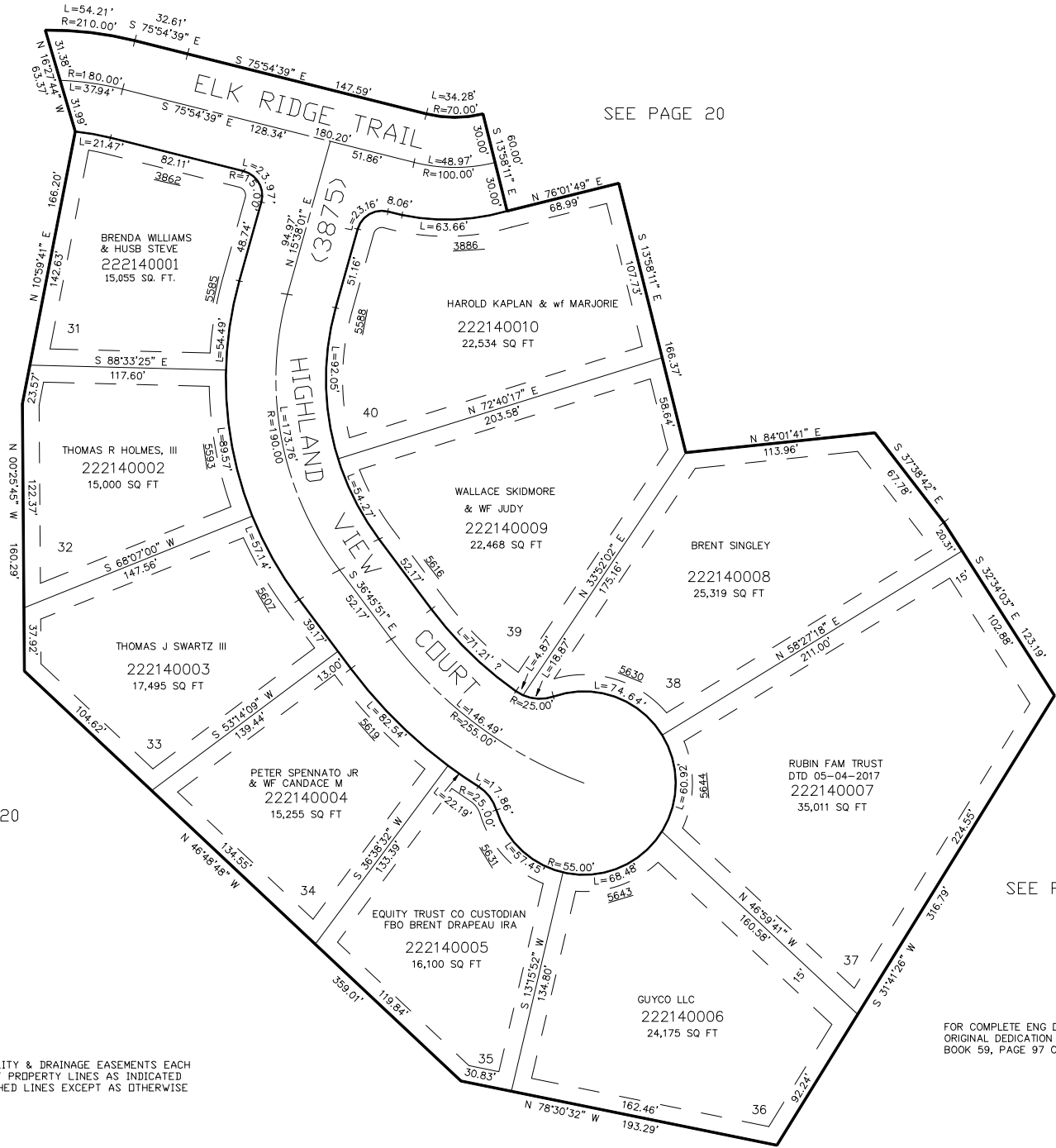
PART OF THE SW 1/4, OF SECTION 23, T.7N., R.1E., S.L.B. & M.
THE HIGHLANDS AT WOLF CREEK PHASE 3

IN WEBER COUNTY

TAXING UNIT: 203

SCALE 1" = 50'

SEE PAGE 20



SEE PAGE 20

SEE PAGE 20

10' UTILITY & DRAINAGE EASEMENTS EACH
SIDE OF PROPERTY LINES AS INDICATED
BY DASHED LINES EXCEPT AS OTHERWISE
SHOWN.

FOR COMPLETE ENG DATA SEE
ORIGINAL DEDICATION PLAT IN
BOOK 59, PAGE 97 OF RECORDS.