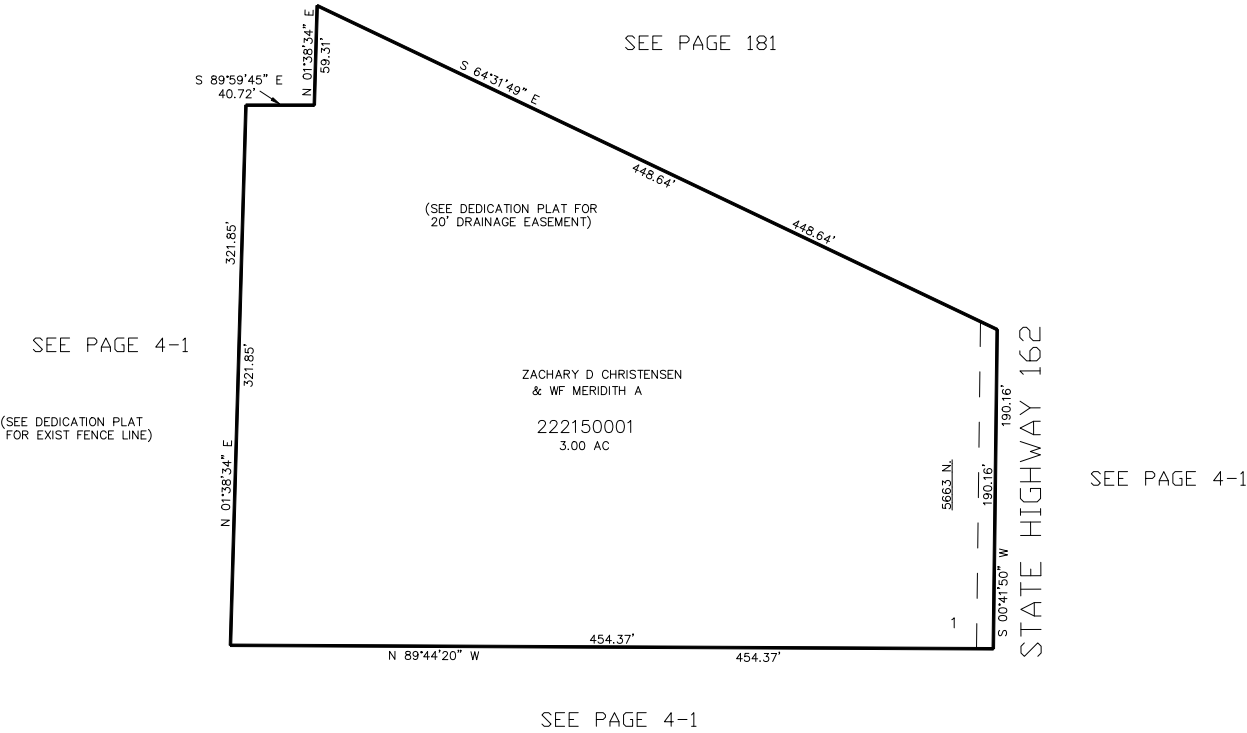


PART OF THE N.E.1/4, OF SECTION 7, T.7N., R.1E., S.L.B. & M.
CJ MONTGOMERY SUBDIVISION

IN WEBER COUNTY
SCALE 1" = 60'

TAXING UNIT: 36



10' UTILITY & DRAINAGE EASEMENTS EACH
SIDE OF PROPERTY LINES AS INDICATED
BY DASHED LINES EXCEPT AS OTHERWISE
SHOWN.

FOR COMPLETE ENG DATA SEE
ORIGINAL DEDICATION PLAT IN
BOOK 59, PAGE 99 OF RECORDS.

FOR TAX PURPOSES ONLY