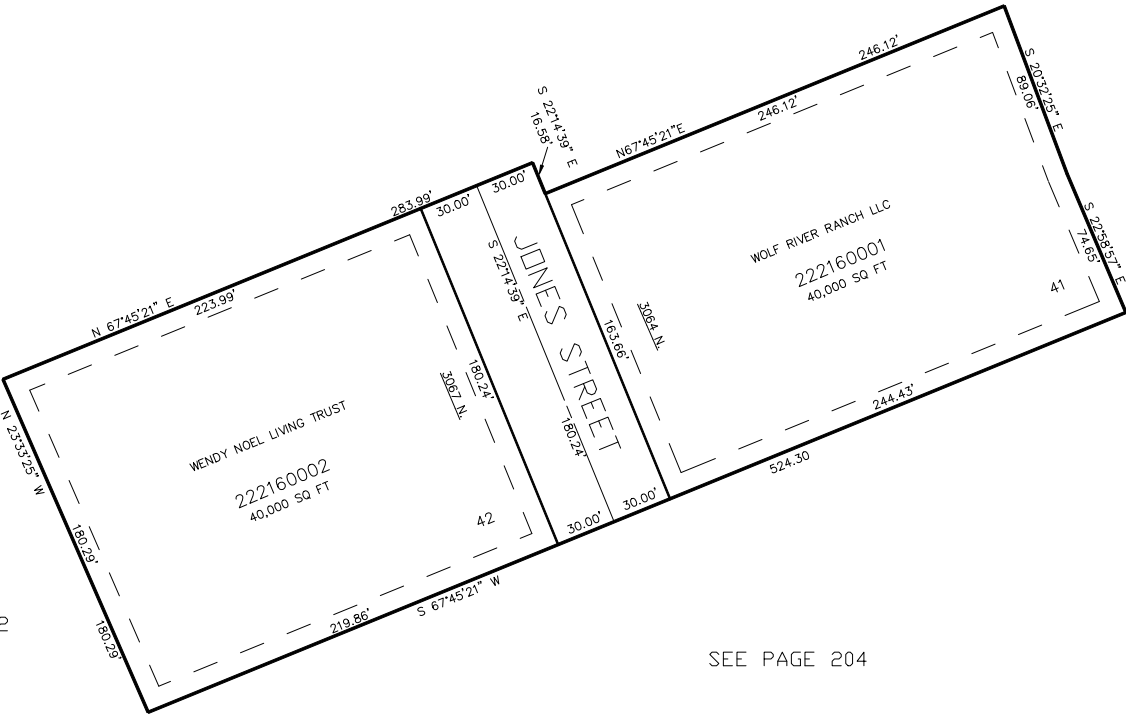


PART OF THE WEST 1/2, OF SECTION 27, T.7N., R.1E., S.L.B. & M.
MOUNTAIN VIEW ESTATES NO.8

IN WEBER COUNTY
SCALE 1" = 50'

TAXING UNIT: 28

SEE PAGE 21-2



SEE PAGE 21-2

SEE PAGE 204

10' UTILITY & DRAINAGE EASEMENTS EACH
SIDE OF PROPERTY LINES AS INDICATED
BY DASHED LINES EXCEPT AS OTHERWISE
SHOWN.

FOR COMPLETE ENG DATA SEE
ORIGINAL DEDICATION PLAT IN
BOOK 60, PAGE 5 OF RECORDS.