

PART OF THE SE.1/4, OF SECTION 21, THE SW.1/4, OF SECTION 22, AND THE
NE.1/4, OF SECTION 28, T.7N., R.1E., S.L.B. & M.

218

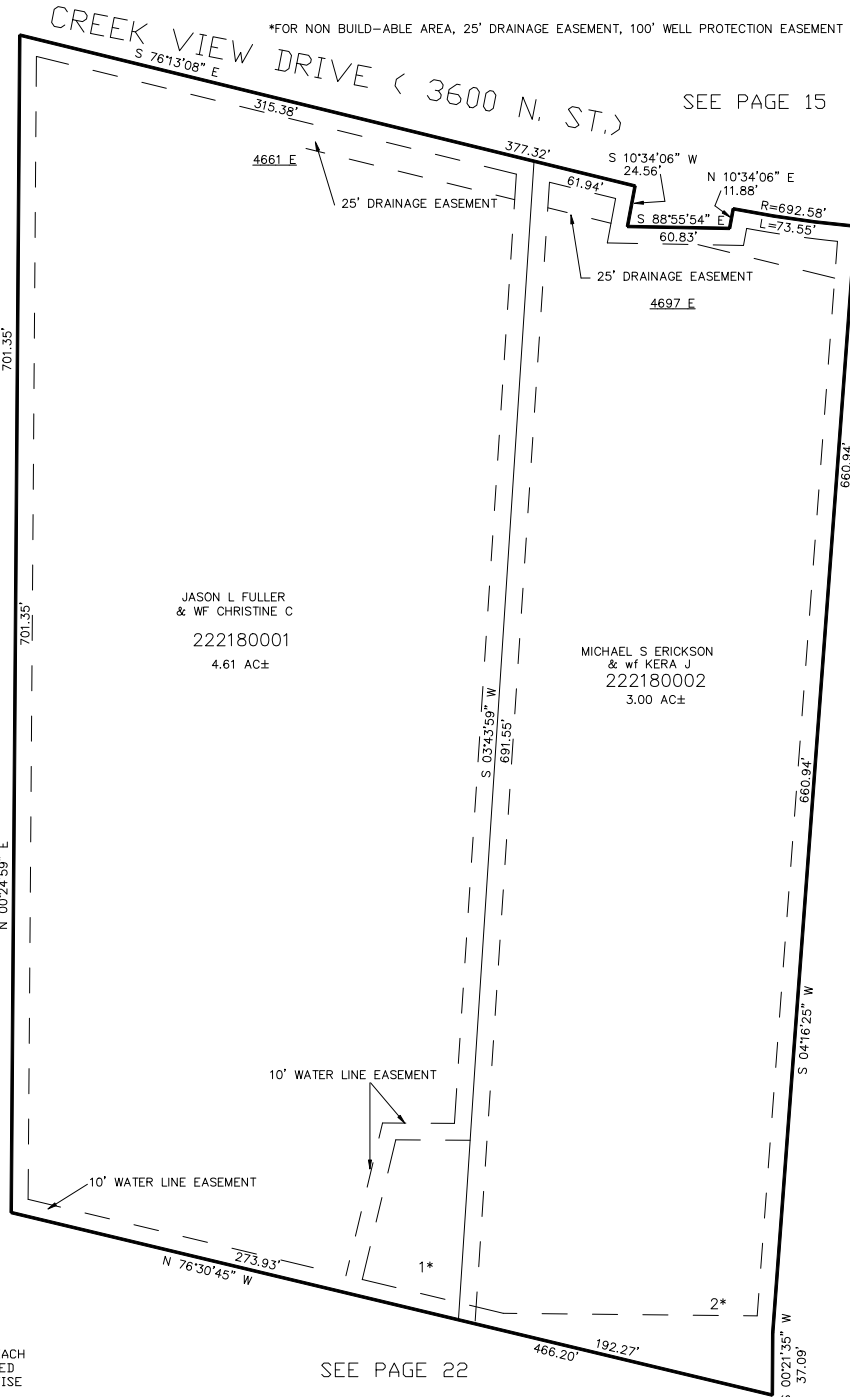
RASPBERRY HILLS SUBDIVISION

IN WEBER COUNTY

TAXING UNIT: 36

SCALE 1" = 60'

*FOR NON BUILD-ABLE AREA, 25' DRAINAGE EASEMENT, 100' WELL PROTECTION EASEMENT SEE DED. PLAT



SEE PAGE 15

SEE PAGE 16

SEE PAGE 22

10' UTILITY & DRAINAGE EASEMENTS EACH
SIDE OF PROPERTY LINES AS INDICATED
BY DASHED LINES EXCEPT AS OTHERWISE
SHOWN.

FOR COMPLETE ENG DATA SEE
ORIGINAL DEDICATION PLAT IN
BOOK 60, PAGE 55 OF RECORDS.

FOR TAX PURPOSES ONLY

BK 10-04