

PART OF THE NE.1/4, OF SECTION 30, T.7N., R.1E., S.L.B. & M.
SPRING MOUNTAIN SUBDIVISION No. 2

IN WEBER COUNTY

TAXING UNIT: 36

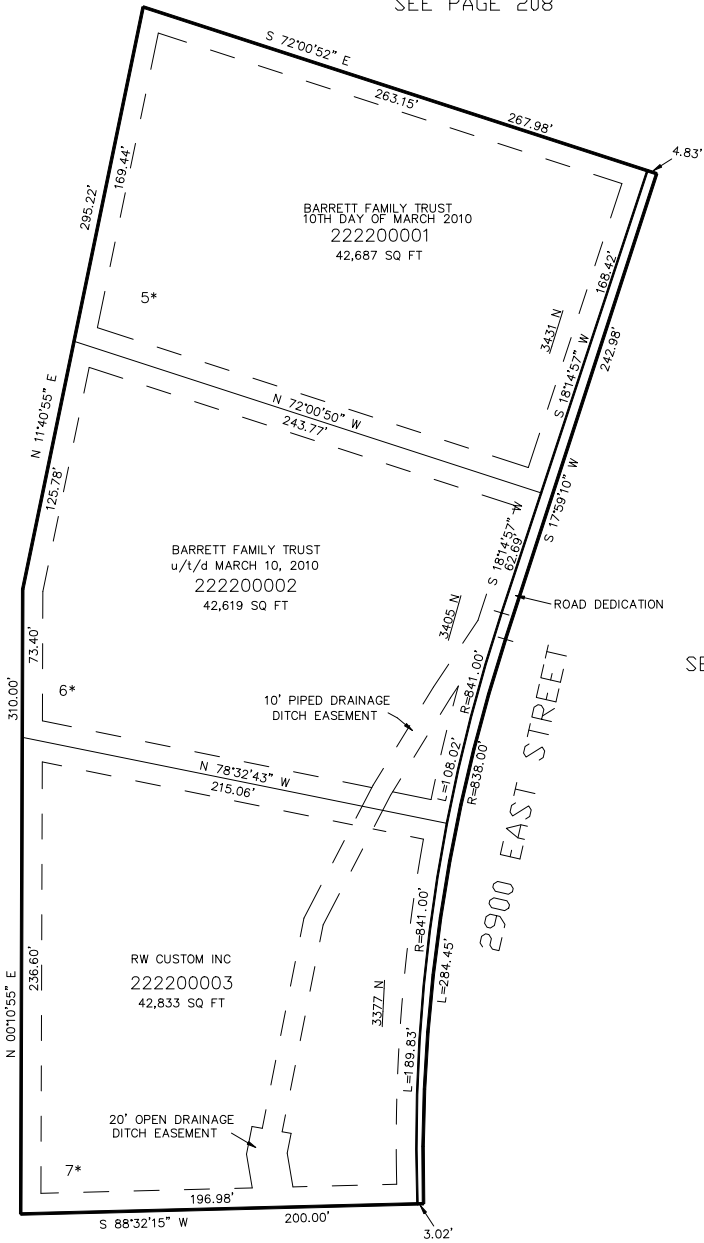
SCALE 1" = 50'

* FOR BUILDABLE & DRAINFIELD AREA, WELL PROTECTION ZONE, & ALL OTHER EASEMENTS SEE DED. PLAT

SEE PAGE 208

SEE PAGE 25-1

SEE PAGE 25-1



10' UTILITY & DRAINAGE EASEMENTS EACH
SIDE OF PROPERTY LINES AS INDICATED
BY DASHED LINES EXCEPT AS OTHERWISE
SHOWN.

FOR COMPLETE ENG DATA SEE
ORIGINAL DEDICATION PLAT IN
BOOK 60, PAGE 69 OF RECORDS.

SEE PAGE 25-1

FOR TAX PURPOSES ONLY