

PART OF THE SE.1/4, OF SECTION 22, T.7N., R.1E., S.L.B. & M.
CASCADES AT MOOSE HOLLOW CONDOMINIUM PHASE 3

IN WEBER COUNTY
SCALE 1" = 30'

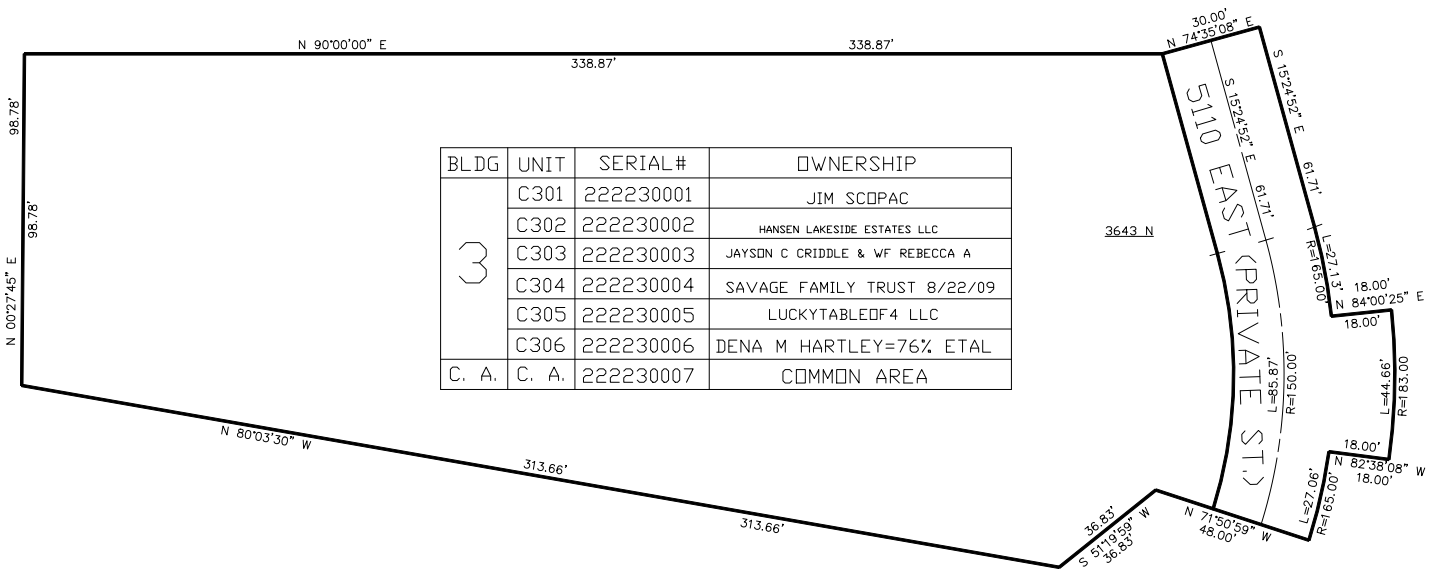
TAXING UNIT: 203

SEE PAGE 16

*FOR HUNTSMAN PATH SEE DED. PLAT

SEE PAGE 16

SEE PAGE 224



SEE PAGE 198

FOR COMPLETE ENG DATA SEE
ORIGINAL DEDICATION PLAT IN
BOOK 60, PAGE 99-101 OF RECORDS.

FOR TAX PURPOSES ONLY