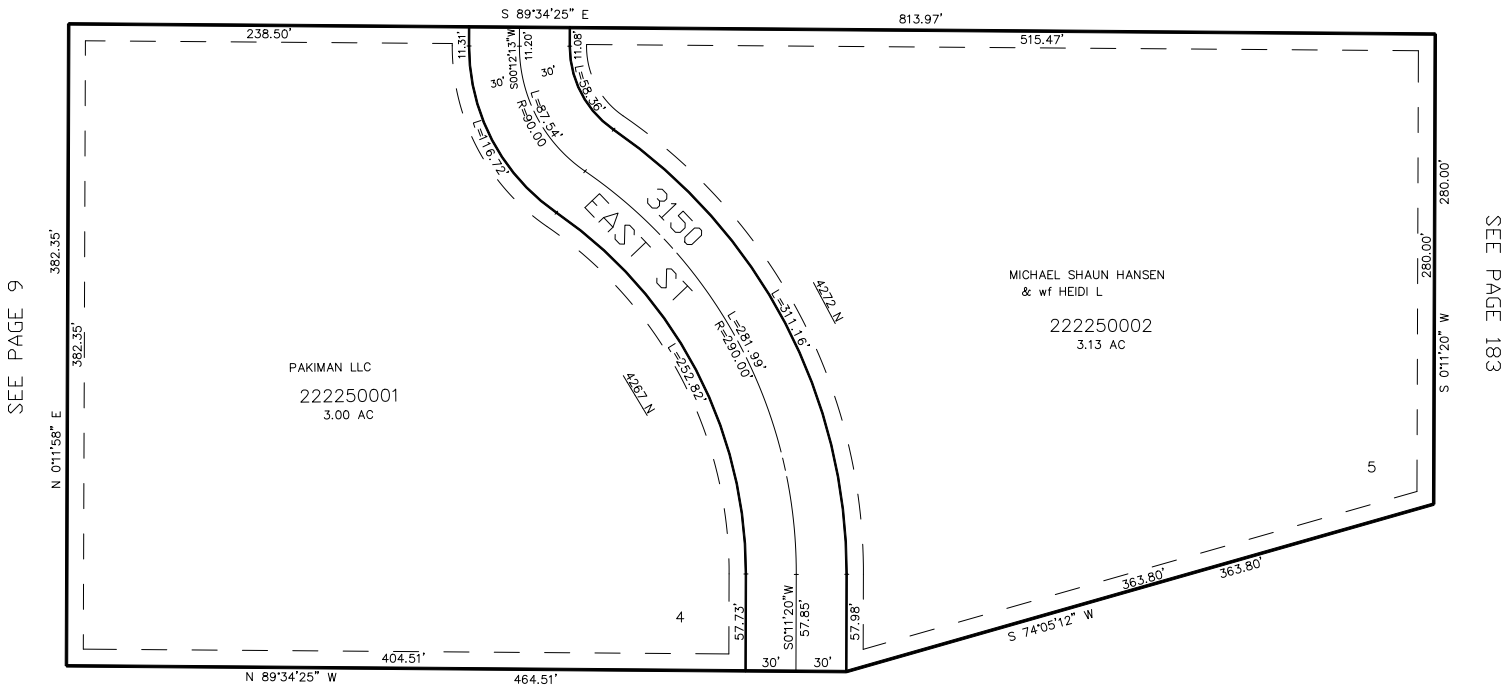


PART OF THE N.W.1/4, OF SECTION 20, T.7N., R.1E., S.L.B. & M.
WARD ACRES SUBDIVISION PHASE 2

IN WEBER COUNTY
SCALE 1" = 60'

TAXING UNIT: 36

SEE PAGE 146



SEE PAGE 11

10' UTILITY & DRAINAGE EASEMENTS EACH
SIDE OF PROPERTY LINES AS INDICATED
BY DASHED LINES EXCEPT AS OTHERWISE
SHOWN.

FOR COMPLETE ENG DATA SEE
ORIGINAL DEDICATION PLAT IN
BOOK 61, PAGE 9 OF RECORDS.

FOR TAX PURPOSES ONLY