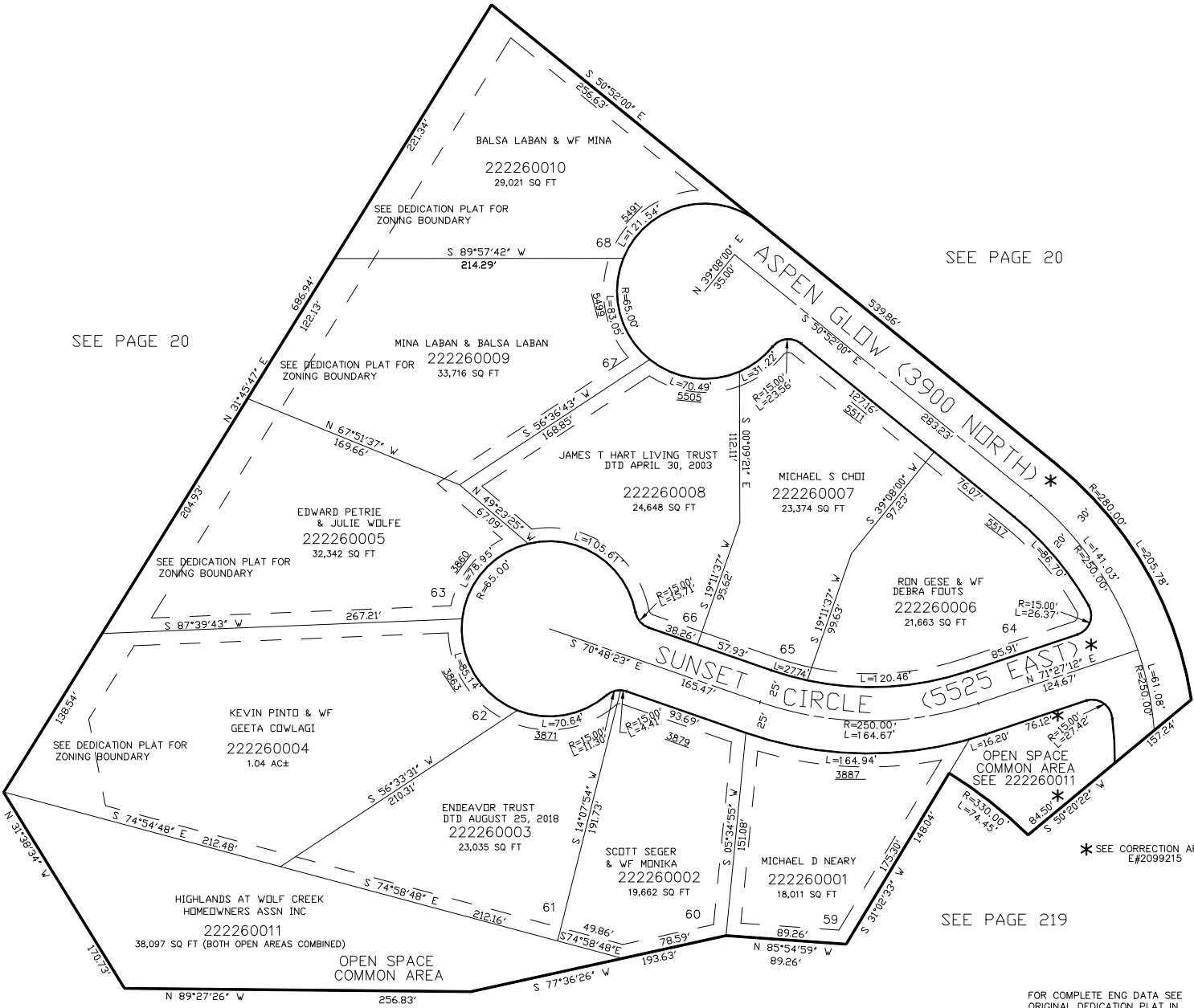


PART OF THE W.1/2, OF SECTION 23, T.7N., R.1E., S.L.B. & M.  
THE HIGHLANDS AT WOLF CREEK PHASE 5

IN WEBER COUNTY  
SCALE 1" = 60'

TAXING UNIT: 203



SEE PAGE 20

SEE PAGE 20

SEE PAGE 219

FOR COMPLETE ENG DATA SEE  
ORIGINAL DEDICATION PLAT IN  
BOOK 61, PAGE 24 OF RECORDS.

SEE PAGES 194 & 195

\*FOR TAX PURPOSES ONLY\*