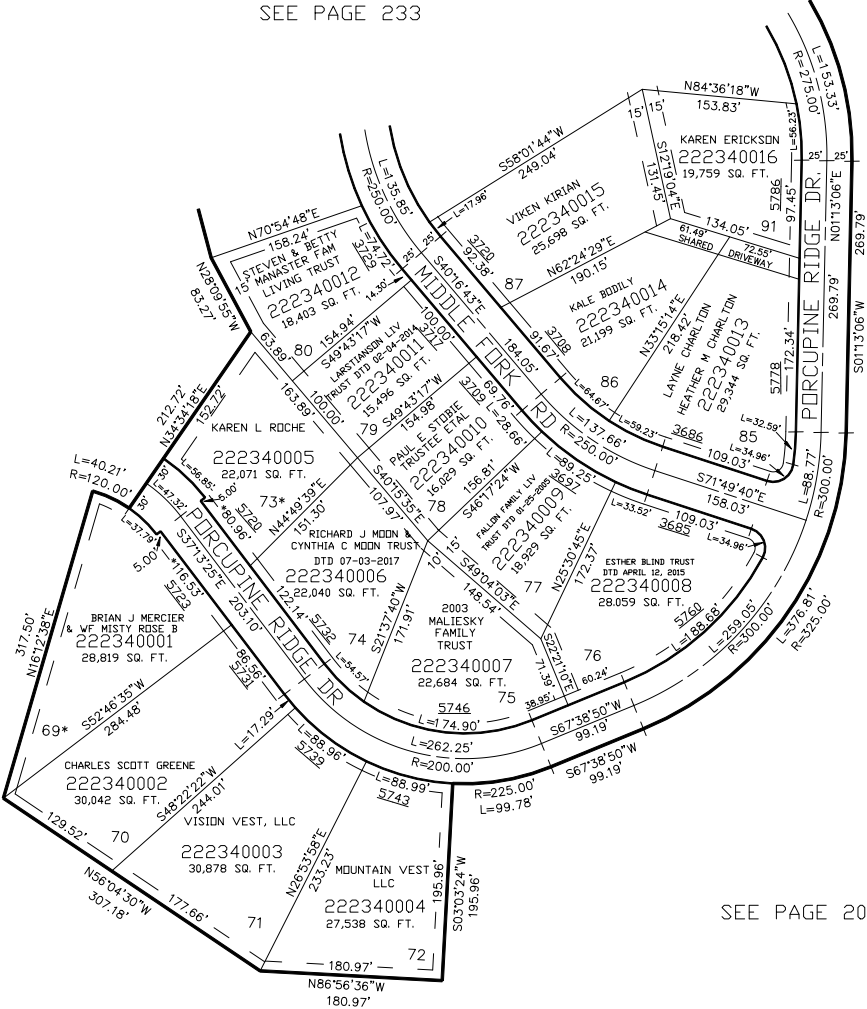


PART OF THE NW 1/4 OF SECTION 23, T.7N., R.1E, S.L.B. & M.
THE HIGHLANDS AT WOLF CREEK PH 6

IN WEBER COUNTY
SCALE 1" = 100'

TAXING UNIT: 203

SEE PAGE 233



SEE PAGE 20

SEE PAGE 20

10' UTILITY & DRAINAGE EASEMENTS EACH SIDE OF PROPERTY LINES AS INDICATED BY DASHED LINES EXCEPT AS OTHERWISE SHOWN.

* CORR. AFFT. #2112895
LOTS 69 & 73

FOR COMPLETE ENG DATA SEE ORIGINAL DEDICATION PLAT IN BOOK 61, PAGE 61 OF RECORDS.

FOR TAX PURPOSES ONLY