

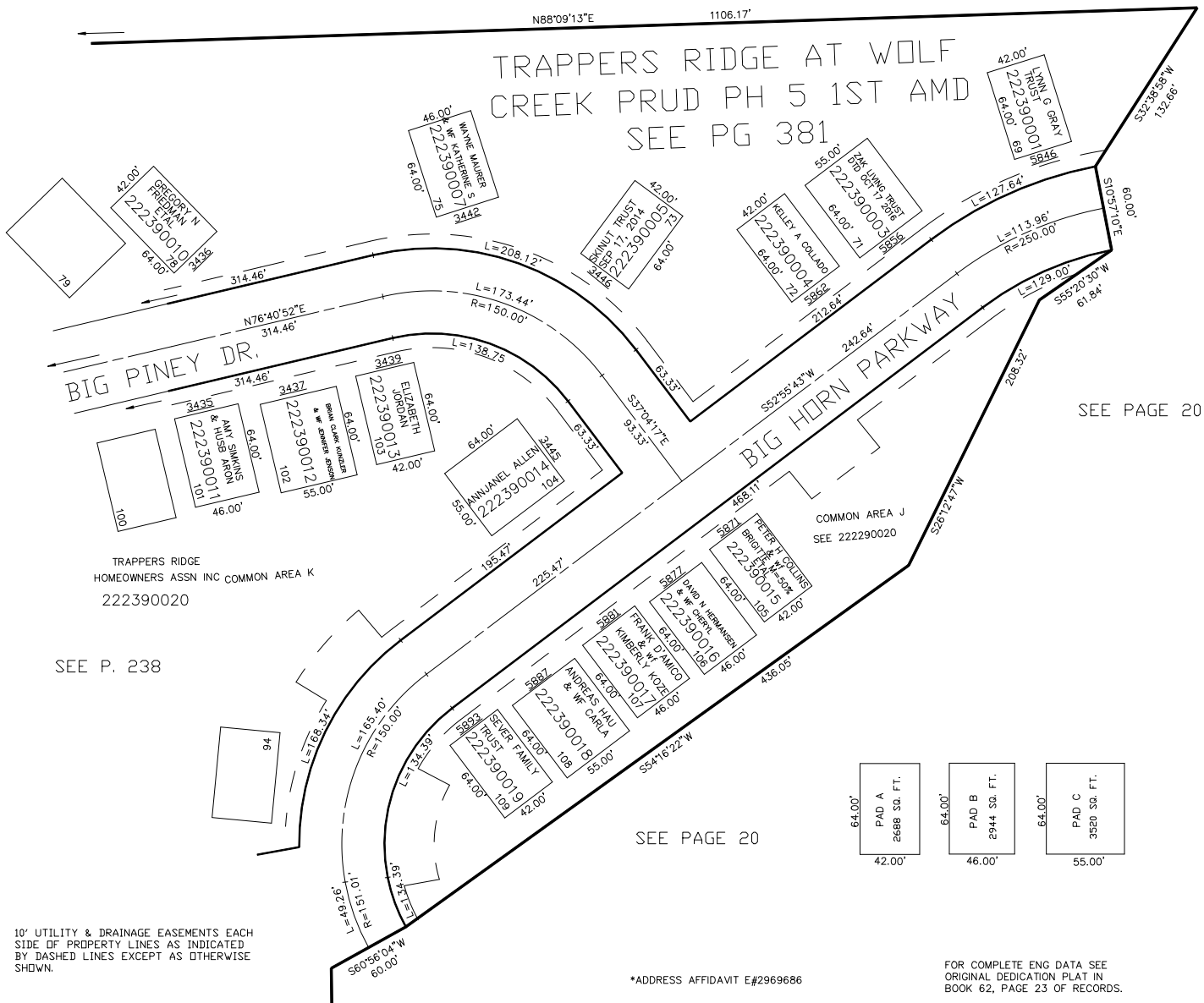
PART OF THE NW 1/4, OF SECTION 26, T.7N., R.1E., S.L.B. & M.  
TRAPPERS RIDGE AT WOLF CREEK PRUD PH. 5

IN WEBER COUNTY

TAXING UNIT: 203

SCALE 1" = 60'

SEE PAGE 20



SEE PAGE 20

SEE PAGE 20

SEE P. 238

TRAPPERS RIDGE  
HOMEOWNERS ASSN INC COMMON AREA K  
222390020

10' UTILITY & DRAINAGE EASEMENTS EACH  
SIDE OF PROPERTY LINES AS INDICATED  
BY DASHED LINES EXCEPT AS OTHERWISE  
SHOWN.

\*ADDRESS AFFIDAVIT E#2969686

FOR COMPLETE ENG DATA SEE  
ORIGINAL DEDICATION PLAT IN  
BOOK 62, PAGE 23 OF RECORDS.