

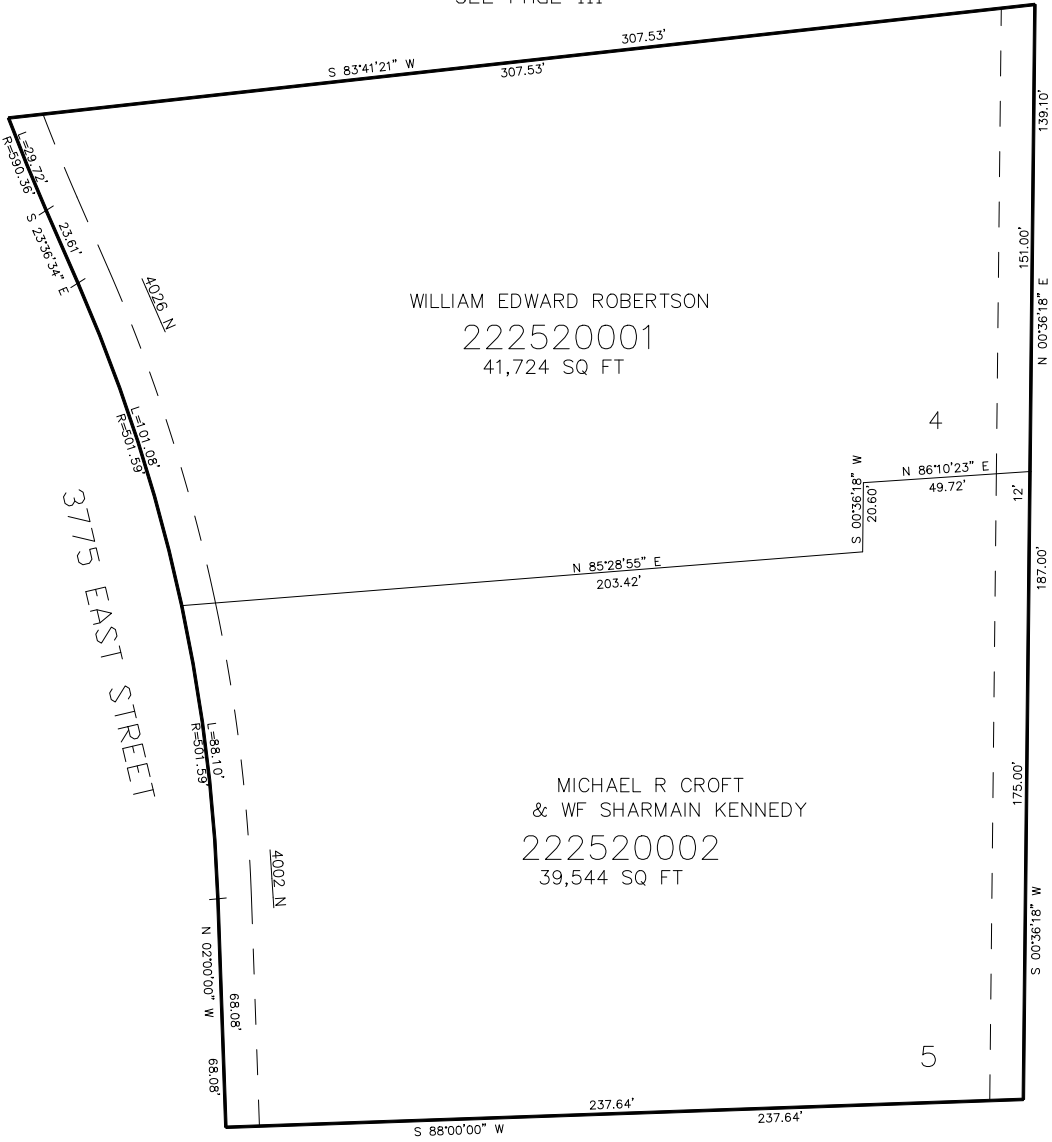
PART OF THE NE.1/4, OF SECTION 20, T.7N., R.1E., S.L.B. & M.
COTONWOOD HILLS ESTATES 1ST AMENDMENT—LOTS 4 & 5

IN WEBER COUNTY

TAXING UNIT: 36

SCALE 1" = 30'

SEE PAGE 111



SEE PAGE 10

SEE PAGE 111

SEE PAGE 111

FOR COMPLETE ENG DATA SEE
ORIGINAL DEDICATION PLAT IN
BOOK 63, PAGE 28 OF RECORDS.

10' UTILITY & DRAINAGE EASEMENTS EACH
SIDE OF PROPERTY LINES AS INDICATED
BY DASHED LINES EXCEPT AS OTHERWISE
SHOWN.

FOR TAX PURPOSES ONLY