

PART OF THE SE.1/4, OF SECTION 34, T.7N., R.1E., S.L.B. & M.
PELICAN BLUFF SUBDIVISION

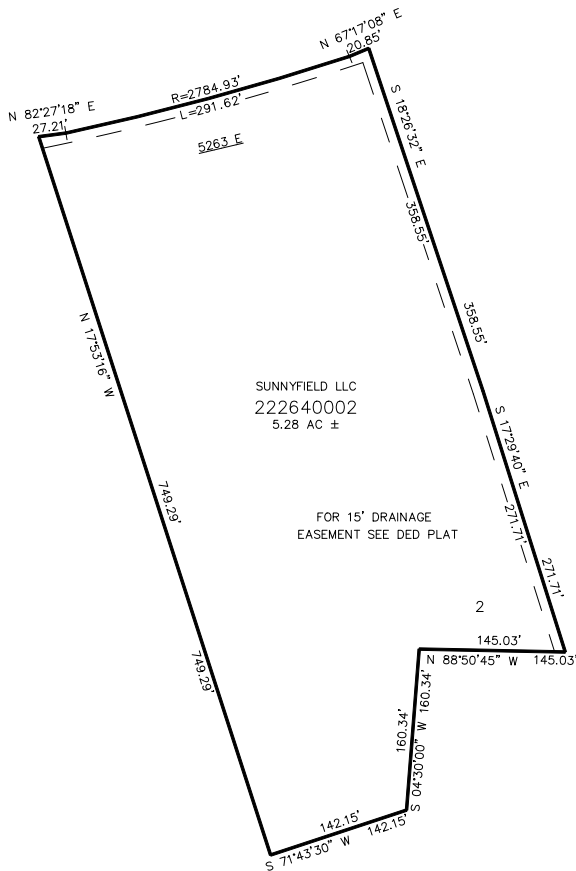
IN WEBER COUNTY
SCALE 1" = 100'

TAXING UNIT: 28

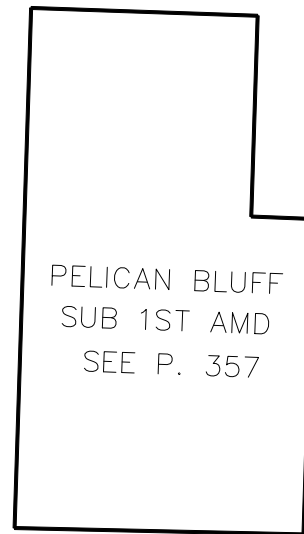
SEE PAGE 47

2200 NORTH STREET

SEE PAGE 47



SEE PAGE 47



SEE PAGE 47

SEE PAGE 47

FOR COMPLETE ENG DATA SEE
ORIGINAL DEDICATION PLAT IN
BOOK 64, PAGE 61 OF RECORDS.

10' UTILITY & DRAINAGE EASEMENTS EACH
SIDE OF PROPERTY LINES AS INDICATED
BY DASHED LINES EXCEPT AS OTHERWISE
SHOWN.