

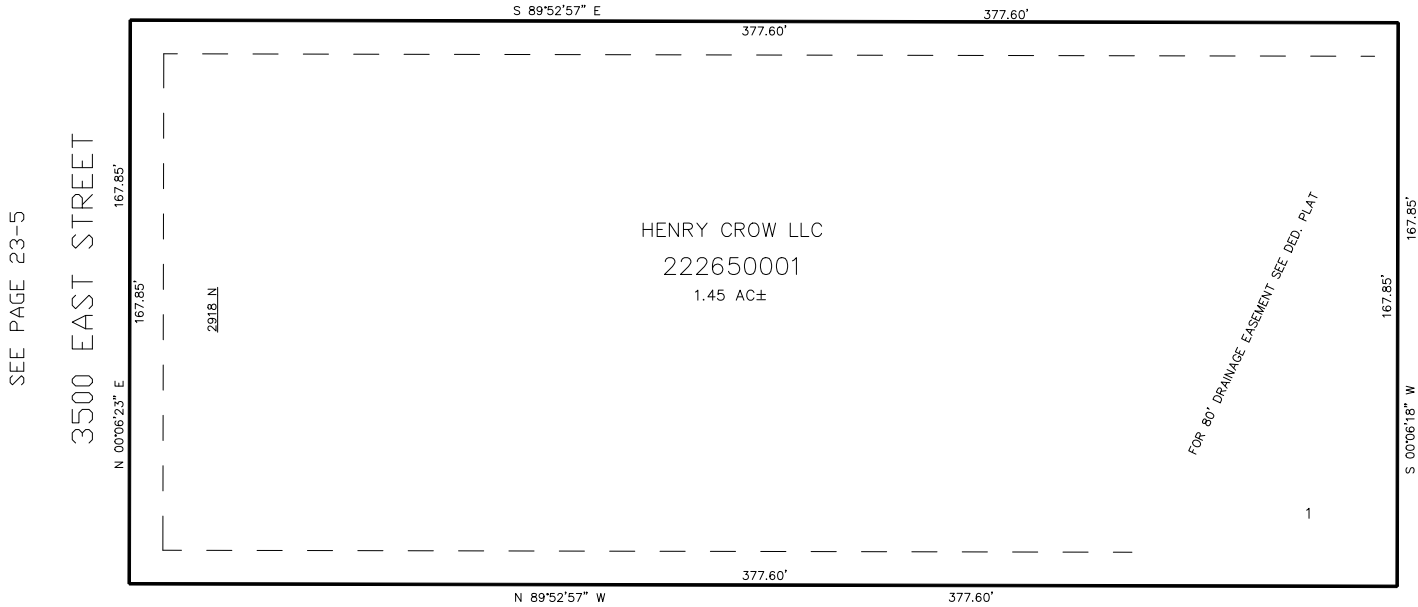
PART OF THE SE.1/4, OF SECTION 29, T.7N., R.1E., S.L.B. & M.  
PAIGE SANDERS SUBDIVISION

265

TAXING UNIT: 36

IN WEBER COUNTY  
SCALE 1" = 30'

SEE PAGE 23-3



SEE PAGE 23-3

10' UTILITY & DRAINAGE EASEMENTS EACH  
SIDE OF PROPERTY LINES AS INDICATED  
BY DASHED LINES EXCEPT AS OTHERWISE  
SHOWN.

FOR COMPLETE ENG DATA SEE  
ORIGINAL DEDICATION PLAT IN  
BOOK 64, PAGE 88 OF RECORDS.