

PART OF THE NW.1/4, OF SECTION 17, T.7N., R.1E., S.L.B. & M.

289

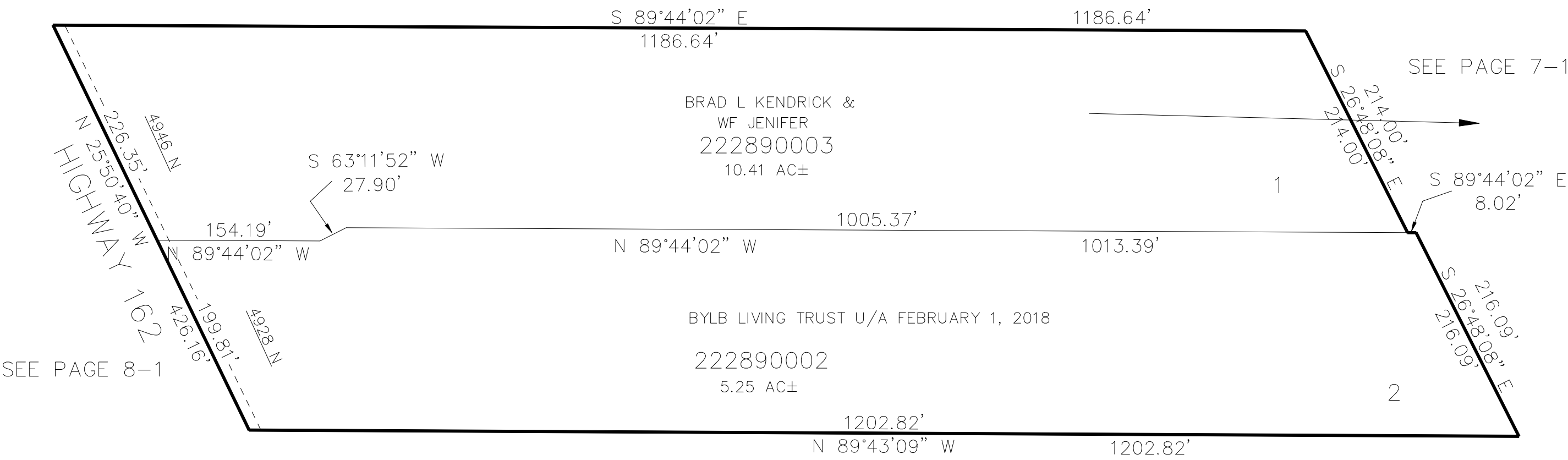
HWJR SUBDIVISION

IN WEBER COUNTY

TAXING UNIT: 36

SCALE 1" = 100'

SEE PAGE 7-1



SEE PAGE 8-1

SEE PAGE 7-1

10' UTILITY & DRAINAGE EASEMENTS EACH
SIDE OF PROPERTY LINES AS INDICATED
BY DASHED LINES EXCEPT AS OTHERWISE
SHOWN.

FOR COMPLETE ENG DATA SEE
ORIGINAL DEDICATION PLAT IN
BOOK 69, PAGE 05 OF RECORDS.