

PART OF THE SW.1/4, OF SECTION 21, T.7N., R.1E., S.L.B. & M.

298

# RIVER WOOD ESTATES SUBDIVISION

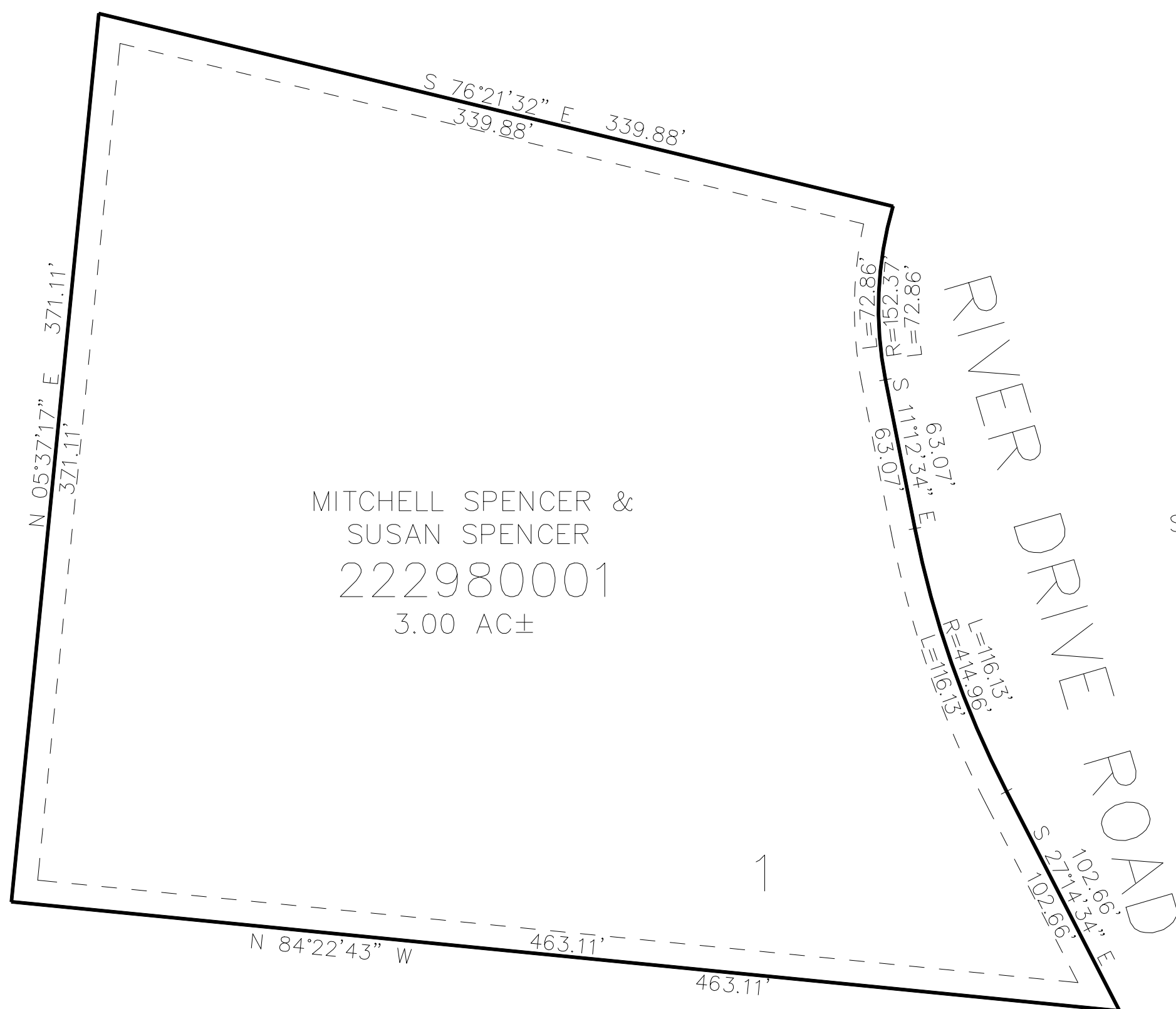
IN WEBER COUNTY

TAXING UNIT: 36

SCALE 1" = 50'

SEE PAGE 15-3

SEE PAGE 15-3



SEE PAGE 15-3

SEE PAGE 15-3

10' UTILITY & DRAINAGE EASEMENTS EACH  
SIDE OF PROPERTY LINES AS INDICATED  
BY DASHED LINES EXCEPT AS OTHERWISE  
SHOWN.

FOR COMPLETE ENG DATA SEE  
ORIGINAL DEDICATION PLAT IN  
BOOK 69, PAGE 94 OF RECORDS.