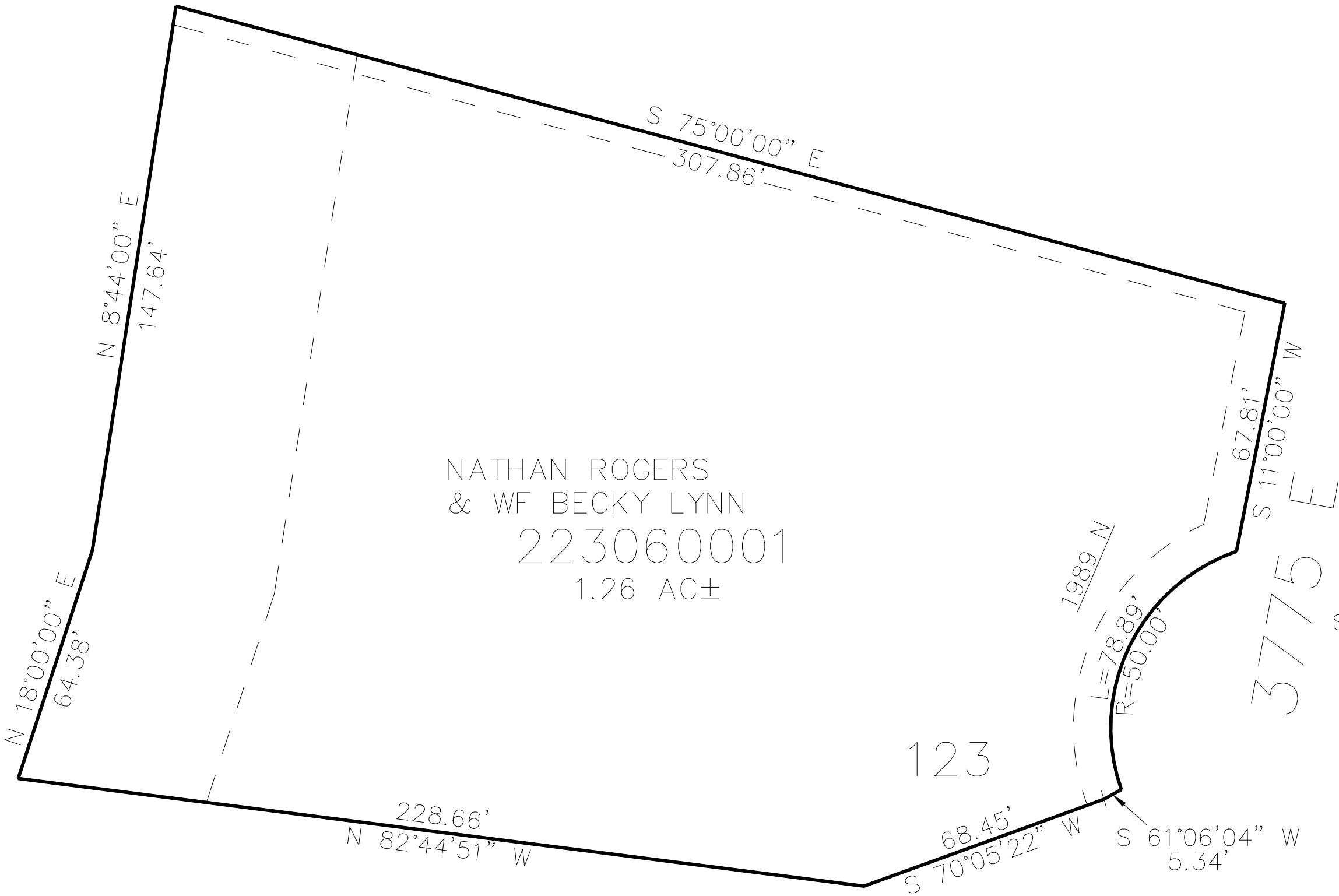


PART OF THE SE1/4, OF SECTION 32, T.7N., R.1E., S.L.B. & M.
SIVER BELL ESTATES PHASE 1, 2ND AMENDMENT LOT 55

IN WEBER COUNTY
SCALE 1" = 30'

TAXING UNIT: 28

SEE PAGE 32



10' UTILITY & DRAINAGE EASEMENTS EACH
SIDE OF PROPERTY LINES AS INDICATED
BY DASHED LINES EXCEPT AS OTHERWISE
SHOWN.

FOR COMPLETE ENG DATA SEE
ORIGINAL DEDICATION PLAT IN
BOOK 71, PAGE 79 OF RECORDS.