

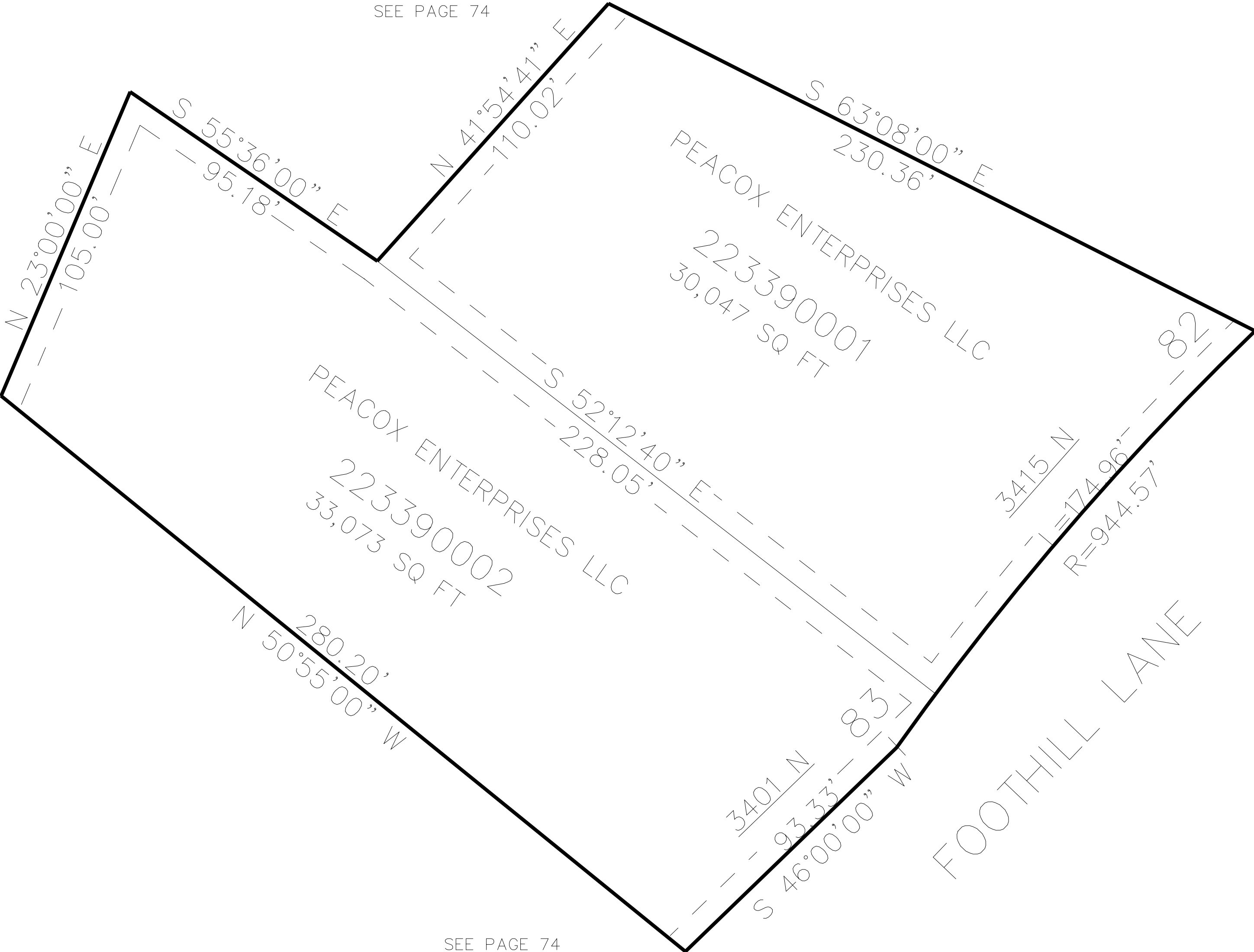
PART OF THE NE. 1/4, OF SECTION 28, T.7N., R.1E., S.L.B. & M.
EDEN HILLS SUBDIVISION NO. 3 1ST AMENDMENT

339

TAXING UNIT: 28

IN WEBER COUNTY
SCALE 1" = 30'

SEE PAGE 74



7' UTILITY & DRAINAGE EASEMENTS EACH
SIDE OF PROPERTY LINES AS INDICATED
BY DASHED LINES EXCEPT AS OTHERWISE
SHOWN.

FOR COMPLETE ENG DATA SEE
ORIGINAL DEDICATION PLAT IN
BOOK 80, PAGE 35 OF RECORDS.