

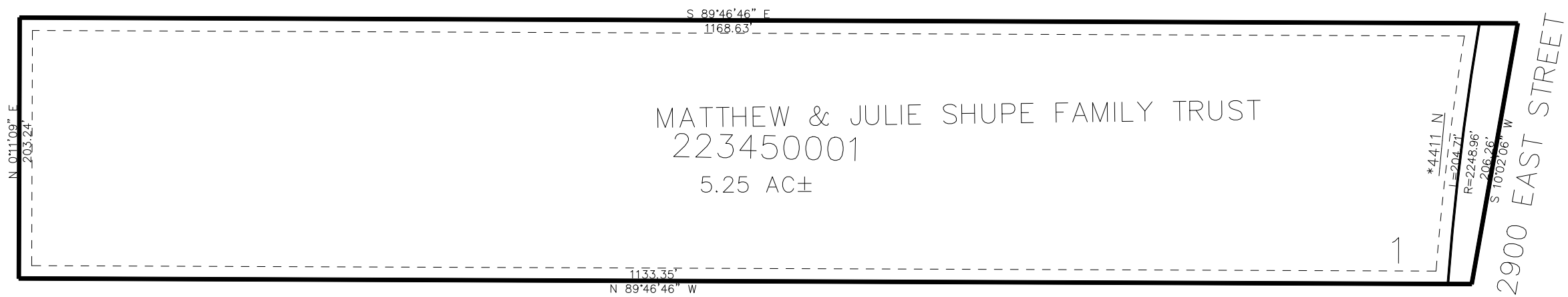
PART OF THE SE. 1/4, OF SECTION 18, T.7N., R.1E., S.L.B. & M.
OLD WHISPERING OAKS SUBDIVISION

345

TAXING UNIT: 36

IN WEBER COUNTY
SCALE 1" = 100'

SEE PAGE 8



10' UTILITY & DRAINAGE EASEMENTS EACH
SIDE OF PROPERTY LINES AS INDICATED
BY DASHED LINES EXCEPT AS OTHERWISE
SHOWN.

FOR COMPLETE ENG DATA SEE
ORIGINAL DEDICATION PLAT IN
BOOK 81, PAGE 76 OF RECORDS.