

PART OF THE SW. 1/4, OF SECTION 15, AND THE SE. 1/4 OF SECTION 16 T.7N., R.1E., S.L.B. & M.

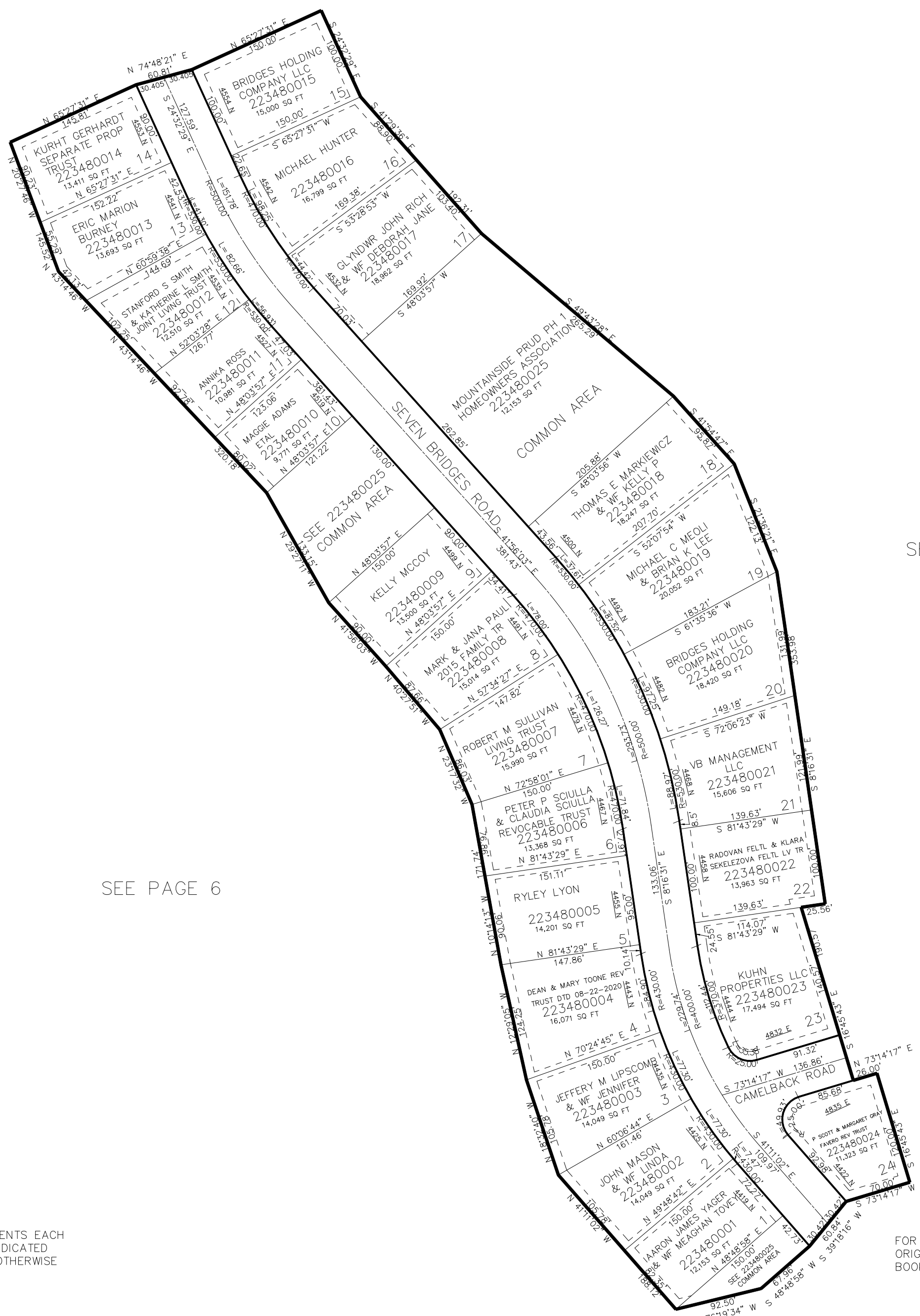
MOUNTAINSIDE PRUD PHASE 1

348

IN WEBER COUNTY

SCALE 1" = 100'

TAXING UNIT: 203



SEE PAGE 6

SEE PAGE 6

10' UTILITY & DRAINAGE EASEMENTS EACH
SIDE OF PROPERTY LINES AS INDICATED
BY DASHED LINES EXCEPT AS OTHERWISE
SHOWN.

FOR COMPLETE ENG DATA SEE
ORIGINAL DEDICATION PLAT IN
BOOK 81, PAGE 98 & 99 OF RECORDS.

FOR TAX PURPOSES ONLY