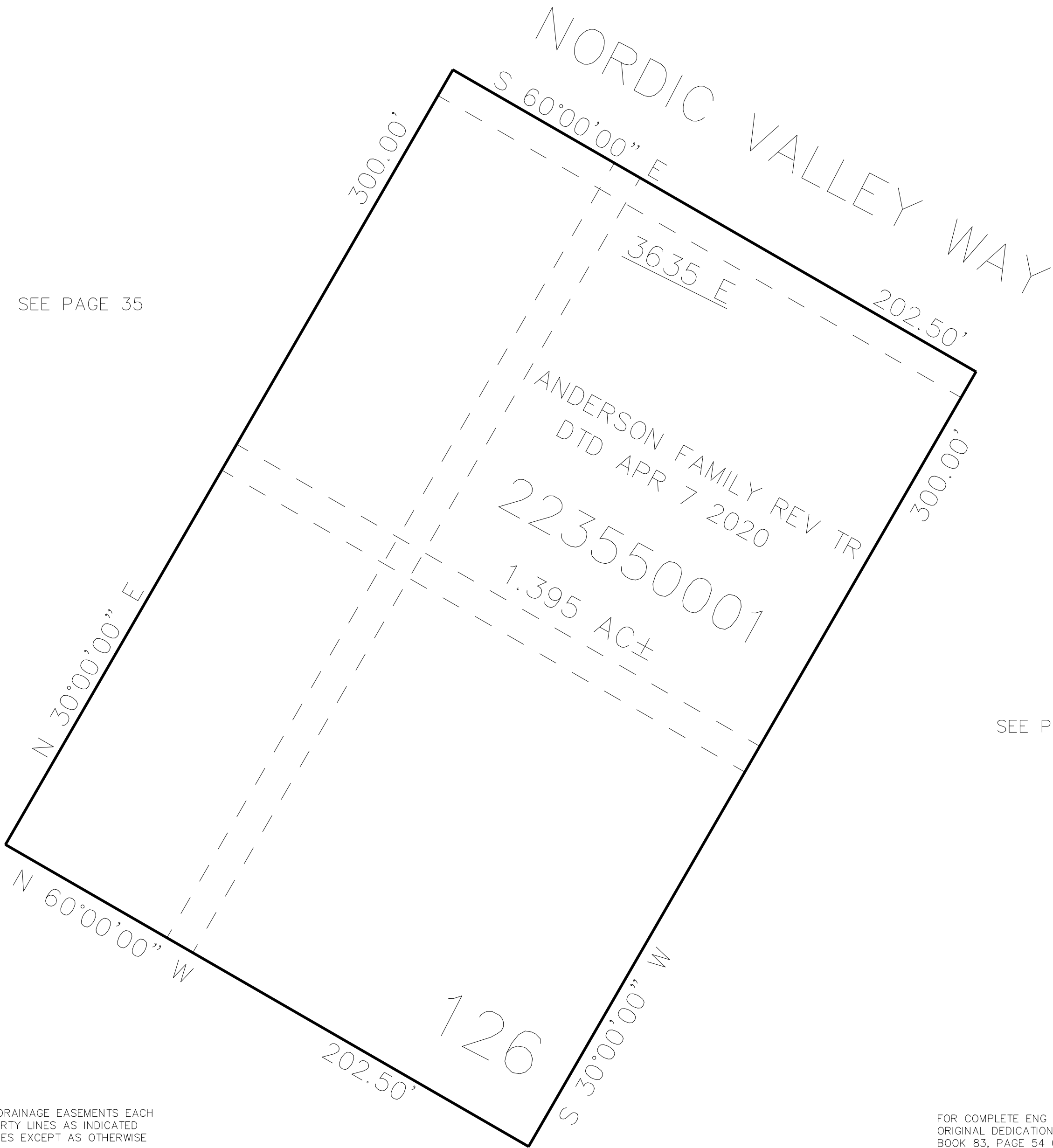


PART OF THE NE. 1/4, OF SECTION 32, T.7N., R.1E., S.L.B. & M.
SILVER BELL ESTATES NO. 1, 4TH AMENDMENT

355

TAXING UNIT: 28

IN WEBER COUNTY
SCALE 1" = 30'



10' UTILITY & DRAINAGE EASEMENTS EACH
SIDE OF PROPERTY LINES AS INDICATED
BY DASHED LINES EXCEPT AS OTHERWISE
SHOWN.

FOR COMPLETE ENG DATA SEE
ORIGINAL DEDICATION PLAT IN
BOOK 83, PAGE 54 OF RECORDS.