

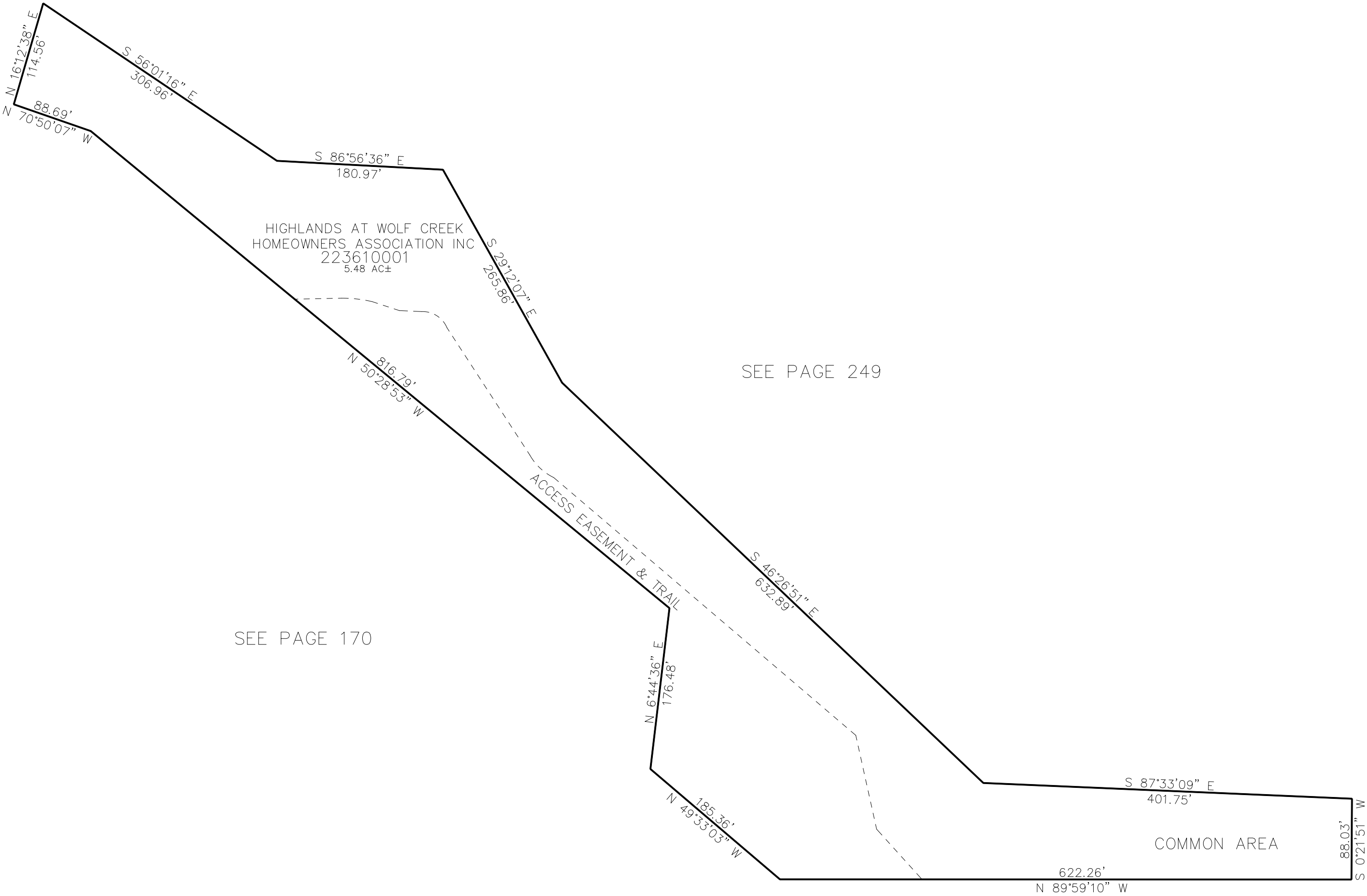
PART OF THE SW. 1/4, OF SECTION 23, T.7N., R.1E., S.L.B. & M.  
THE HIGHLANDS AT WOLF CREEK PHASE 8 1ST AMENDMENT

361

IN WEBER COUNTY  
SCALE 1" = 100'

TAXING UNIT: 203

SEE PAGE 206



SEE PAGE 249

SEE PAGE 170

SEE PAGE 20

10' UTILITY & DRAINAGE EASEMENTS EACH  
SIDE OF PROPERTY LINES AS INDICATED  
BY DASHED LINES EXCEPT AS OTHERWISE  
SHOWN.

FOR COMPLETE ENG DATA SEE  
ORIGINAL DEDICATION PLAT IN  
BOOK 84, PAGE 69 OF RECORDS.