

PART OF THE SE 1/4 OF SECTION 22 AND NE 1/4, OF SECTION 27, T.7N., R.1E., S.L.B. & M.

365

ELKHORN SUBDIVISION PH 2, 2ND AMD

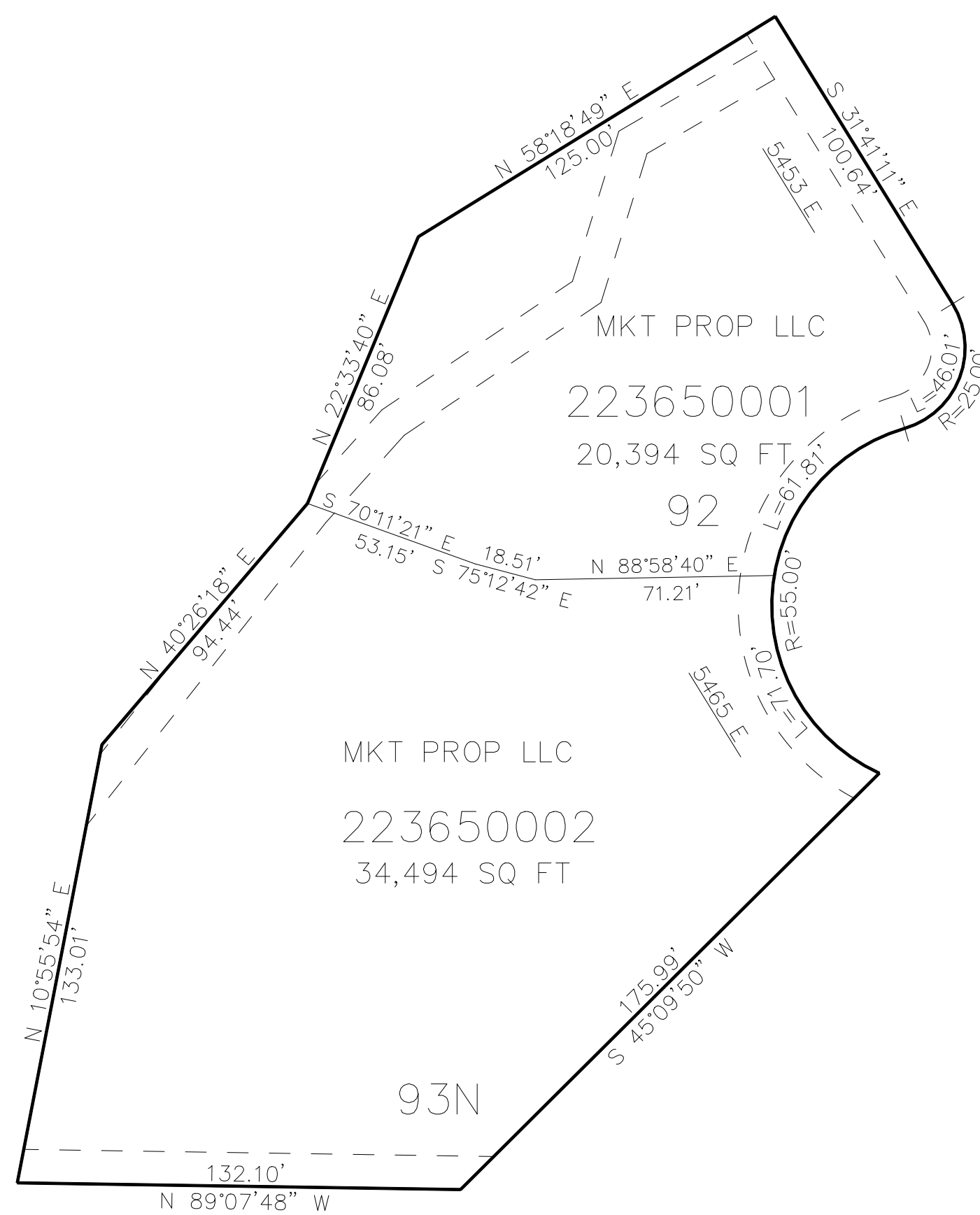
IN WEBER COUNTY

TAXING UNIT: 203

SCALE 1" = 40'

SEE PAGE 130

SEE PAGE 130



SEE PAGE 130

10' UTILITY & DRAINAGE EASEMENTS EACH
SIDE OF PROPERTY LINES AS INDICATED
BY DASHED LINES EXCEPT AS OTHERWISE
SHOWN.

FOR COMPLETE ENG DATA SEE
ORIGINAL DEDICATION PLAT IN
BOOK 85, PAGE 53 OF RECORDS.