

PART OF THE SW. 1/4, OF SECTION 27, T.7N., R.1E., S.L.B. & M.

369

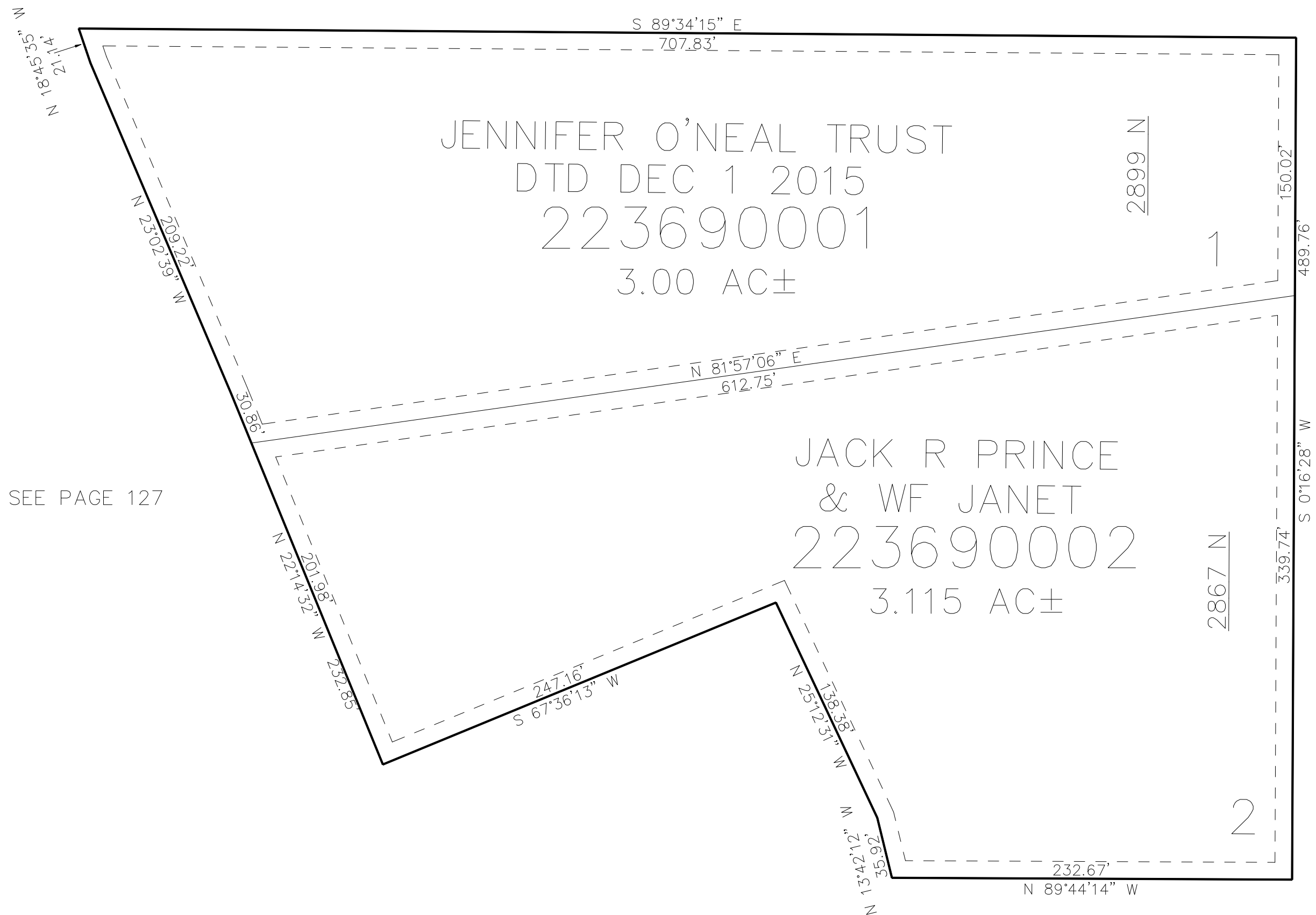
PRINCE SUBDIVISION

IN WEBER COUNTY

TAXING UNIT: 28

SCALE 1" = 60'

SEE PAGE 123



SEE PAGE 127

SEE PAGE 332

10' UTILITY & DRAINAGE EASEMENTS EACH
SIDE OF PROPERTY LINES AS INDICATED
BY DASHED LINES EXCEPT AS OTHERWISE
SHOWN.

FOR COMPLETE ENG DATA SEE
ORIGINAL DEDICATION PLAT IN
BOOK 85, PAGE 89 OF RECORDS.