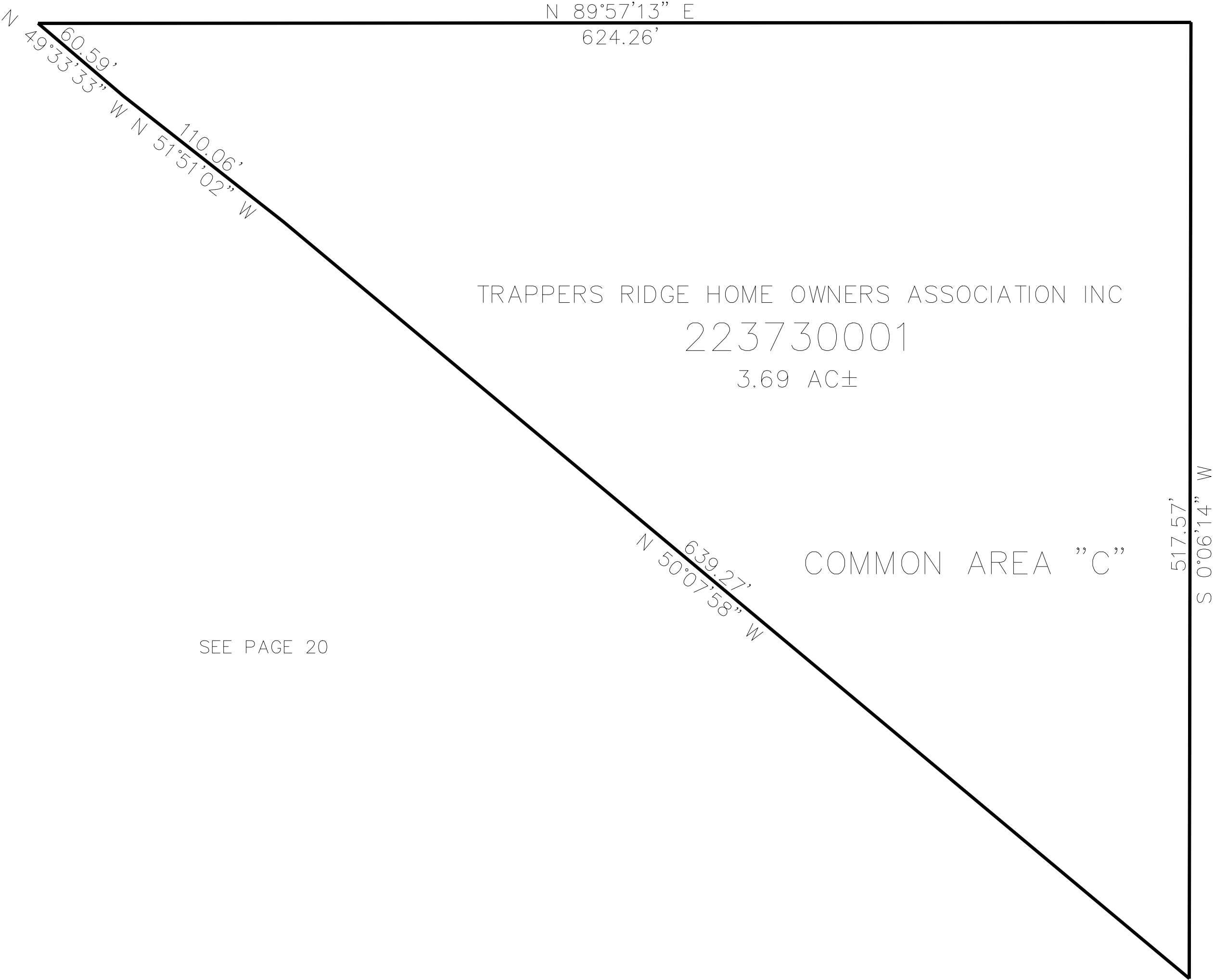


PART OF THE NW.1/4, OF SECTION 26, T.7N., R.1E., S.L.B. & M.  
TRAPPERS RIDGE AT WOLF CREEK PRUD PH 2 1ST AMENDMENT

TAXING UNIT: 203

IN WEBER COUNTY  
SCALE 1" = 50'

SEE PAGE 20



SEE PAGE 20

10' UTILITY & DRAINAGE EASEMENTS EACH  
SIDE OF PROPERTY LINES AS INDICATED  
BY DASHED LINES EXCEPT AS OTHERWISE  
SHOWN.

FOR COMPLETE ENG DATA SEE  
ORIGINAL DEDICATION PLAT IN  
BOOK 86, PAGE 43 OF RECORDS.