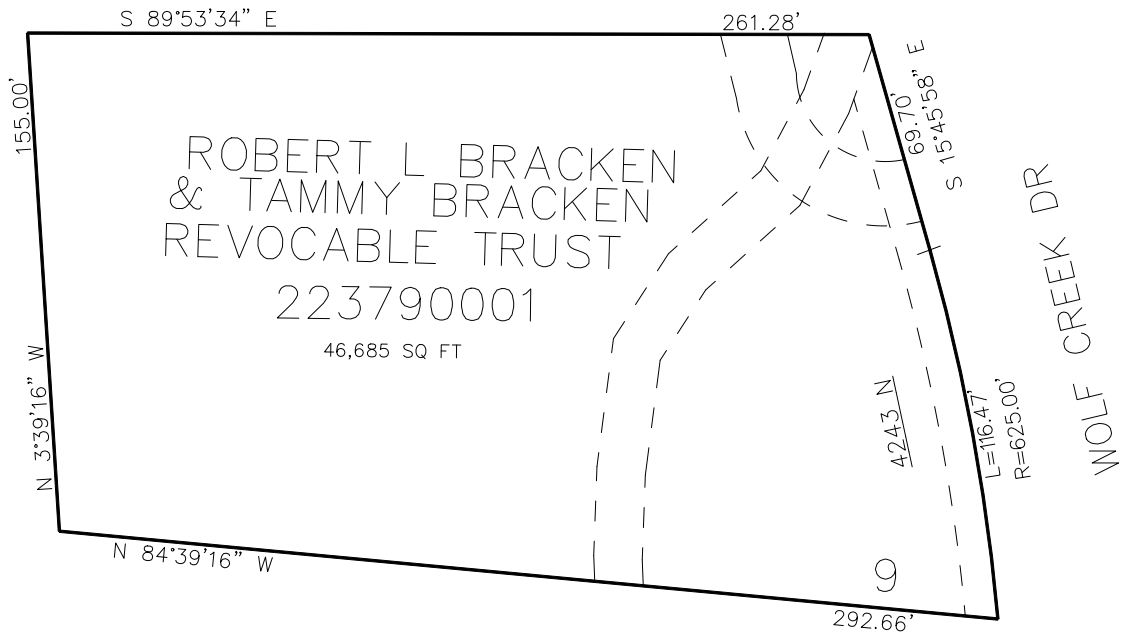


PART OF THE NW. 1/4, OF SECTION 22, T.7N., R.1E., S.L.B. & M.
HIDDEN OAKES AT WOLF CREEK 1ST AMENDMENT

TAXING UNIT: 203

IN WEBER COUNTY
SCALE 1" = 30'

SEE PAGE 209



10' UTILITY & DRAINAGE EASEMENTS EACH
SIDE OF PROPERTY LINES AS INDICATED
BY DASHED LINES EXCEPT AS OTHERWISE
SHOWN.

FOR COMPLETE ENC DATA SEE
ORIGINAL DEDICATION PLAT IN
BOOK 88, PAGE 56 OF RECORDS.