

PART OF THE NW. 1/4, OF SECTION 26, T.7N., R.1E., S.L.B. & M.
TRAPPERS RIDGE AT WOLF CREEK P.R.U.D PHASE 5 1ST AMENDMENT

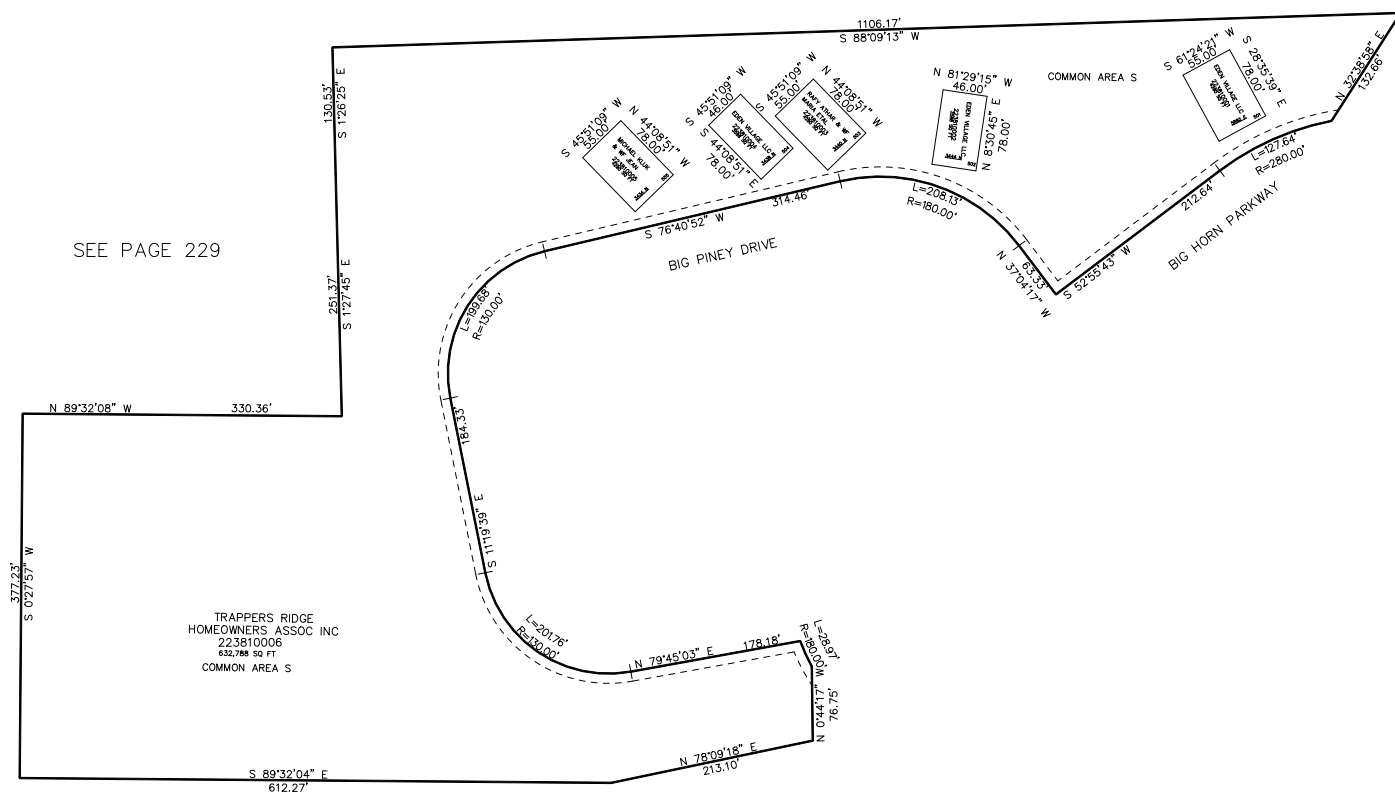
IN WEBER COUNTY

TAXING UNIT: 203

SCALE 1" = 100'

SEE PAGE 20

SEE PAGE 229



10' UTILITY & DRAINAGE EASEMENTS EACH
 SIDE OF PROPERTY LINES AS INDICATED
 BY DASHED LINES EXCEPT AS OTHERWISE
 SHOWN.

FOR COMPLETE ENC DATA SEE
 ORIGINAL DEDICATION PLAT IN
 BOOK 88, PAGE 82 OF RECORDS.